

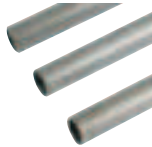
HOOFDSTUK 4 ROESTVAST STAAL



Pagina 292



Pagina 293



Pagina 295



Pagina 297



Pagina 298



Pagina 300



Pagina 309



Pagina 316



Pagina 318

4 Draadfittingen - RVS AISI-316



Hydrauliek Hoogwaardige industriële kwaliteit.
Materiaal: RVS AISI-316 (1,4404) = Cr,16-18% Ni,10-14%, Mn,2% max, Mo,2-3% max, Si,1% max, C,0,08% max, P,0,045% max, S,0,03% max
Snelkoppelingen Normering: BSPT-Conisch schroefdraad, BS21:ISO 7,1; DIN-2999 (A4 = RVS AISI-316)
 BSP-Parallel schroefdraad, BS2779:ISO 228
Afsluiters Veiligheidsfactor: 4



-20°C tot 290°C



10

Roestvast staal

Fittingen

Luchtconditionering

Gereedschap Dubbele nippel - BSPT male



	RVSK	BSPT	€
HN-18		1/8"	2.40
HN-14		1/4"	2.50
HN-38		3/8"	3.00
HN-12		1/2"	3.60
HN-34		3/4"	4.55
HN-1		1"	6.65
HN-114		1.1/4"	9.30
HN-112		1.1/2"	10.85
HN-2		2"	15.45
HN-212		2.1/2"	26.00
HN-3		3"	37.95
HN-4		4"	62.00

Slangen

Water, Gas, Sanitair, Verwarming



Verlooppnippel - BSPT male

	RVSK	BSPT A	BSPT B	€
RHN-14-18		1/4"	1/8"	3.20
RHN-38-18		3/8"	1/8"	3.50
RHN-38-14		3/8"	1/4"	3.55
RHN-12-18		1/2"	1/8"	4.25
RHN-12-14		1/2"	1/4"	4.70
RHN-12-38		1/2"	3/8"	4.70
RHN-34-18		3/4"	1/8"	5.40
RHN-34-14		3/4"	1/4"	5.45
RHN-34-38		3/4"	3/8"	5.60
RHN-34-12		3/4"	1/2"	5.70
RHN-1-14		1"	1/4"	7.50
RHN-1-38		1"	3/8"	7.75
RHN-1-12		1"	1/2"	8.15
RHN-1-34		1"	3/4"	8.45
RHN-114-12		1.1/4"	1/2"	10.20
RHN-114-34		1.1/4"	3/4"	10.90
RHN-114-1		1.1/4"	1"	10.85
RHN-112-12		1.1/2"	1/2"	12.95
RHN-112-34		1.1/2"	3/4"	13.15
RHN-112-1		1.1/2"	1"	13.55
RHN-112-114		1.1/2"	1.1/4"	15.35
RHN-2-12		2"	1/2"	20.75
RHN-2-34		2"	3/4"	20.20
RHN-2-1		2"	1"	20.40
RHN-2-114		2"	1.1/4"	20.70
RHN-2-112		2"	1.1/2"	20.90



Verlooping - BSPT male/BSP female

	RVSK	BSPT A	BSPB	€
RB-14-18		1/4"	1/8"	1.95
RB-38-14		3/8"	1/4"	2.30
RB-38-18		3/8"	1/8"	2.40
RB-12-18		1/2"	1/8"	2.50
RB-12-14		1/2"	1/4"	2.90
RB-12-38		1/2"	3/8"	2.90
RB-34-14		3/4"	1/4"	3.85
RB-34-38		3/4"	3/8"	3.95
RB-34-12		3/4"	1/2"	4.00
RB-1-14		1"	1/4"	5.10
RB-1-38		1"	3/8"	5.20
RB-1-12		1"	1/2"	5.70
RB-1-34		1"	3/4"	5.80
RB-114-12		1.1/4"	1/2"	7.00
RB-114-34		1.1/4"	3/4"	7.90
RB-114-1		1.1/4"	1"	8.20
RB-112-12		1.1/2"	1/2"	9.55
RB-112-34		1.1/2"	3/4"	10.20
RB-112-1		1.1/2"	1"	10.30
RB-112-114		1.1/2"	1.1/4"	10.20
RB-2-12		2"	1/2"	15.05
RB-2-34		2"	3/4"	15.20
RB-2-1		2"	1"	14.90
RB-2-114		2"	1.1/4"	14.80
RB-2-112		2"	1.1/2"	16.00
RB-212-1		2.1/2"	1"	26.75
RB-212-114		2.1/2"	1.1/4"	26.85
RB-212-112		2.1/2"	1.1/2"	26.95
RB-212-2		2.1/2"	2"	27.55
RB-3-1		3"	1"	37.20
RB-3-114		3"	1.1/4"	38.05
RB-3-112		3"	1.1/2"	39.25
RB-3-2		3"	2"	39.50
RB-3-212		3"	2.1/2"	40.25
RB-4-3		4"	3"	63.25

Sok - doorlopend draad - BSP female



	RVSK	BSPB	€
FS-18		1/8"	2.30
FS-14		1/4"	2.45
FS-38		3/8"	2.65
FS-12		1/2"	3.10
FS-34		3/4"	4.80
FS-1		1"	7.90
FS-114		1.1/4"	10.40
FS-112		1.1/2"	14.90
FS-2		2"	22.35
FS-212		2.1/2"	44.55
FS-3		3"	55.70
FS-4		4"	85.70

Halve sok - BSP female



	RVSK	BSPB	€
HS-18		1/8"	1.85
HS-14		1/4"	1.85
HS-38		3/8"	1.90
HS-12		1/2"	2.65
HS-34		3/4"	3.10
HS-1		1"	4.15
HS-114		1.1/4"	7.90
HS-112		1.1/2"	9.20
HS-2		2"	12.35
HS-212		2.1/2"	21.50
HS-3		3"	29.00
HS-4		4"	43.25

Draadfittingen - RVS AISI-316



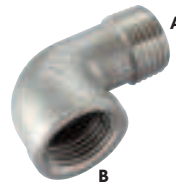
Verloopsok - BSP female

RVSK	BSPP	BSPP	€
FRS-14-18	1/4"	1/8"	2.90
FRS-38-14	3/8"	1/4"	3.15
FRS-38-18	3/8"	1/8"	3.55
FRS-12-18	1/2"	1/8"	3.85
FRS-12-14	1/2"	1/4"	4.35
FRS-12-38	1/2"	3/8"	4.35
FRS-34-18	3/4"	1/8"	5.35
FRS-34-14	3/4"	1/4"	5.45
FRS-34-38	3/4"	3/8"	5.80
FRS-34-12	3/4"	1/2"	6.00
FRS-1-14	1"	1/4"	8.85
FRS-1-38	1"	3/8"	9.40
FRS-1-12	1"	1/2"	9.80
FRS-1-34	1"	3/4"	9.80
FRS-114-12	1.1/4"	1/2"	11.50
FRS-114-34	1.1/4"	3/4"	13.05
FRS-114-1	1.1/4"	1"	14.80
FRS-112-12	1.1/2"	1/2"	18.30
FRS-112-34	1.1/2"	3/4"	16.45
FRS-112-1	1.1/2"	1"	15.35
FRS-112-114	1.1/2"	1.1/4"	19.10
FRS-2-12	2"	1/2"	25.35
FRS-2-34	2"	3/4"	25.75
FRS-2-1	2"	1"	26.75
FRS-2-114	2"	1.1/4"	30.70
FRS-2-112	2"	1.1/2"	34.30
FRS-212-1	2.1/2"	1"	40.70
FRS-212-114	2.1/2"	1.1/4"	41.70
FRS-212-2	2.1/2"	2"	45.55
FRS-3-1	3"	1"	49.15
FRS-3-114	3"	1.1/4"	53.10
FRS-3-112	3"	1.1/2"	57.40
FRS-3-2	3"	2"	62.55
FRS-3-212	3"	2.1/2"	65.50
FRS-4-112	4"	1.1/2"	81.90
FRS-4-2	4"	2"	83.50
FRS-4-212	4"	2.1/2"	84.90
FRS-4-3	4"	3"	86.25



Knie 90° - BSP female

RVSK	BSPP	€
EE-18	1/8"	1.80
EE-14	1/4"	2.60
EE-38	3/8"	3.75
EE-12	1/2"	4.50
EE-34	3/4"	6.65
EE-1	1"	10.70
EE-114	1.1/4"	15.75
EE-112	1.1/2"	19.50
EE-2	2"	29.85
EE-212	2.1/2"	47.65
EE-3	3"	71.90
EE-4	4"	118.80



Knie 90° - BSPT male/BSP female

RVSK	BSPT	BSPP	€
SE-18	1/8"	1/8"	3.45
SE-14	1/4"	1/4"	3.55
SE-38	3/8"	3/8"	4.15
SE-12	1/2"	1/2"	4.80
SE-34	3/4"	3/4"	6.55
SE-1	1"	1"	8.85
SE-114	1.1/4"	1.1/4"	14.15
SE-112	1.1/2"	1.1/2"	18.15
SE-2	2"	2"	27.50
SE-212	2.1/2"	2.1/2"	48.20
SE-3	3"	3"	80.95
SE-4	4"	4"	131.10



Knie 45° - BSP female

RVSK	BSPP	€
OE-18	1/8"	3.55
OE-14	1/4"	3.55
OE-38	3/8"	3.90
OE-12	1/2"	4.15
OE-34	3/4"	5.90
OE-1	1"	8.95
OE-114	1.1/4"	12.75
OE-112	1.1/2"	18.75
OE-2	2"	26.20
OE-212	2.1/2"	46.70
OE-3	3"	61.40
OE-4	4"	102.45



Tee - BSP female

RVSK	BSPP	€
ET-18	1/8"	3.90
ET-14	1/4"	4.00
ET-38	3/8"	4.65
ET-12	1/2"	5.70
ET-34	3/4"	7.95
ET-1	1"	11.60
ET-114	1.1/4"	17.30
ET-112	1.1/2"	22.25
ET-2	2"	33.45
ET-212	2.1/2"	65.50
ET-3	3"	101.20
ET-4	4"	170.25

- Hydrauliek
- Snelkoppelingen
- Afsluiters
- Roestvast staal
- Fittingen
- Luchtconditionering
- Gereedschap
- Vacuümtechniek
- Pneumatiek
- Onderdelen compressoren
- Diversen
- Malleabele fittingen & Staal
- Ringleidingssystemen
- Slangen
- Water, Gas, Sanitair, Verwarming

Voor RVS slangpilaren zie hoofdstuk 14



4 Draadfittingen - RVS AISI-316



Hydrauliek

Snelkoppelingen

Afsluiters

Roestvast staal



Plug - zeskant - BSPT male

	RVSK	BSPT	€
HP-18		1/8"	1.95
HP-14		1/4"	2.00
HP-38		3/8"	2.10
HP-12		1/2"	3.00
HP-34		3/4"	4.55
HP-1		1"	6.50
HP-114		1.1/4"	9.40
HP-112		1.1/2"	11.70
HP-2		2"	19.50
HP-212		2.1/2"	32.90
HP-3		3"	53.65
HP-4		4"	71.75

Onderdelen compressoren

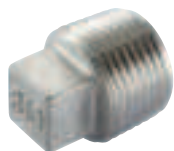
Diversen

Malleabele fittingen & Staal

Ringleidingssystemen

Slangen

Water, Gas, Sanitair, Verwarming



Plug - hol/vierkante kop - BSPT male

	RVSK	BSPT	€
SP-18		1/8"	1.65
SP-14		1/4"	1.80
SP-38		3/8"	1.95
SP-12		1/2"	2.65
SP-34		3/4"	3.20
SP-1		1"	5.60
SP-114		1.1/4"	6.90
SP-112		1.1/2"	8.75
SP-2		2"	14.50
SP-212		2.1/2"	22.35
SP-3		3"	31.40
SP-4		4"	43.25



Nippel - doorlopend draad - BSP male

	RVSK	BSPP	€
CPN-38		3/8"	2.90
CPN-12		1/2"	4.00
CPN-34		3/4"	6.05
CPN-1		1"	8.95
CPN-114		1.1/4"	12.20
CPN-112		1.1/2"	16.40
CPN-2		2"	25.80
CPN-212		2.1/2"	45.30
CPN-3		3"	54.35

Kap - zeskant - BSP female

	RVSK	BSPP	€
HBC-18		1/8"	2.30
HBC-14		1/4"	2.35
HBC-38		3/8"	2.40
HBC-12		1/2"	3.00
HBC-34		3/4"	4.50
HBC-1		1"	5.70
HBC-114		1.1/4"	10.20
HBC-112		1.1/2"	11.70
HBC-2		2"	18.85
HBC-212		2.1/2"	34.10
HBC-3		3"	49.15
HBC-4		4"	77.45

Kap - rond - BSP female

	RVSK	BSPP	€
RC-18		1/8"	2.30
RC-14		1/4"	2.35
RC-38		3/8"	2.40
RC-12		1/2"	3.00
RC-34		3/4"	4.50
RC-1		1"	5.70
RC-114		1.1/4"	9.40
RC-112		1.1/2"	11.70
RC-2		2"	17.30
RC-212		2.1/2"	30.60
RC-3		3"	42.55
RC-4		4"	62.45

Contramoeer - BSP female

	RVSK	BSPP	€
LN-18		1/8"	1.85
LN-14		1/4"	1.95
LN-38		3/8"	2.30
LN-12		1/2"	2.65
LN-34		3/4"	3.15
LN-1		1"	3.80
LN-114		1.1/4"	4.95
LN-112		1.1/2"	6.25
LN-2		2"	8.85
LN-212		2.1/2"	18.50
LN-3		3"	23.60
LN-4		4"	39.25



Pijpnippel - BSPT male

	RVSK	BSPT	L mm	€
BN-18		1/8"	30	2.90
BN-18X40		1/8"	40	3.00
BN-14		1/4"	40	3.10
BN-38		3/8"	40	3.20
BN-12		1/2"	60	4.20
BN-34		3/4"	60	5.00
BN-1		1"	60	7.40
BN-114		1.1/4"	80	13.45
BN-112		1.1/2"	80	14.90
BN-2		2"	100	23.80
BN-212		2.1/2"	100	34.85
BN-3		3"	120	53.25
BN-4		4"	120	76.20



Driedelige koppeling - bolconisch dichtend - BSPT male/BSP female

	RVSK	BSPT A	BSPP B	€
MFU-18		1/8"	1/8"	8.95
MFU-14		1/4"	1/4"	9.30
MFU-38		3/8"	3/8"	11.60
MFU-12		1/2"	1/2"	11.25
MFU-34		3/4"	3/4"	15.35
MFU-1		1"	1"	21.80
MFU-114		1.1/4"	1.1/4"	28.30
MFU-112		1.1/2"	1.1/2"	34.65
MFU-2		2"	2"	52.55
MFU-212		2.1/2"	2.1/2"	90.85
MFU-3		3"	3"	132.80
MFU-4		4"	4"	184.80

Draadfittingen - RVS AISI-316



4



Kruissok - BSP female

RVSK	BSPP	€
EC-18	1/8"	5.05
EC-14	1/4"	6.15
EC-38	3/8"	7.70
EC-12	1/2"	9.25
EC-34	3/4"	12.55
EC-1	1"	16.85
EC-114	1.1/4"	26.75
EC-112	1.1/2"	31.40
EC-2	2"	47.70
EC-3	3"	126.80



Driedelige koppeling - bolconisch dichtend - BSP female

RVSK	BSPP	€
HU-18	1/8"	7.00
HU-14	1/4"	7.20
HU-38	3/8"	8.45
HU-12	1/2"	9.55
HU-34	3/4"	13.15
HU-1	1"	19.00
HU-114	1.1/4"	25.00
HU-112	1.1/2"	30.95
HU-2	2"	46.85
HU-212	2.1/2"	72.95
HU-3	3"	105.80
HU-4	4"	170.80



Naadloze buis - volgens DIN 50049-3.1.B - 3 meter

RVSK	ND	mm	€
2028-5839	1/8"	1,73	76.55
2028-5854	1/4"	2,24	188.25
2028-5862	3/8"	2,31	207.80
2028-5870	1/2"	2,77	233.00
2028-5953	3/4"	2,87	296.50
2028-5961	1"	3,38	495.00
2028-5979	1.1/4"	3,56	584.45
2028-5987	1.1/2"	3,68	661.80
2028-5995	2"	3,91	795.45
2028-6019	2.1/2"	5,16	1000.00
2028-6068	3"	5,49	1346.40



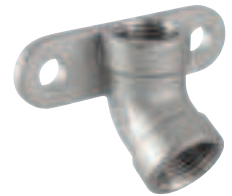
Bocht 90° - BSP male

RVSK	BSPP	€
B90-18	1/8"	8.05
B90-14	1/4"	9.70
B90-38	3/8"	13.45
B90-12	1/2"	16.70
B90-34	3/4"	26.90
B90-1	1"	40.80
B90-114	1.1/4"	69.85
B90-112	1.1/2"	88.25
B90-2	2"	135.50



Y-stuk - BSP female

RVSK	BSPP	€
Y-14	1/4"	2.60
Y-38	3/8"	4.15
Y-12	1/2"	5.75
Y-34	3/4"	7.70
Y-1	1"	12.95
Y-114	1.1/4"	18.10
Y-112	1.1/2"	21.95
Y-2	2"	32.60
Y-212	2.1/2"	57.25
Y-3	3"	98.45
Y-4	4"	149.00



Knie 45° - met strip - BSP female

RVSK	BSPP	€
WEP-12	1/2"	7.30

Hydrauliek
Snelkoppelingen
Afsluiters
Roestvast staal
Fittingen
Luchtconditionering
Gereedschap
Vacuümtechniek
Pneumatiek
Onderdelen compressoren
Diversen
Malleabele fittingen & Staal
Ringleidingssystemen
Slangen
Water, Gas, Sanitair, Verwarming

Voor RVS terugslagkleppen zie hoofdstuk 3



Voor RVS kogelkranen zie hoofdstuk 3



4 Draadfittingen - RVS AISI-316 - NPT draad



Hydrauliek
Snelkoppelingen
Afsluiters



Dubbele nippel - NPT male

	RVSK	NPT	€
Fittingen			
NPT62001010		1/8"	2.90
NPT62001313		1/4"	2.90
Luchtconditionering			
NPT62001717		3/8"	3.35
NPT62002121		1/2"	4.20
Gereedschap			
NPT62002727		3/4"	5.00
NPT62003232		1"	7.70
Vacuumtechniek			
NPT62004242		1.1/4"	10.60
NPT62004848		1.1/2"	11.95
NPT62006060		2"	16.90
Pneumatiek			
NPT62007676		2.1/2"	28.50
NPT62008989		3"	40.95
Onderdelen compressoren			
NPT62000114		4"	71.65



Verloping - NPT male/female

	RVSK	NPT A	NPT B	€
Fittingen				
NPT62041310		1/4"	1/8"	2.10
NPT62041713		3/8"	1/4"	2.50
NPT62042117		1/2"	3/8"	3.20
NPT62042721		3/4"	1/2"	4.40
NPT62043227		1"	3/4"	6.45
NPT62044232		1.1/4"	1"	9.10
NPT62044842		1.1/2"	1.1/4"	11.25
NPT62046048		2"	1.1/2"	17.55
NPT62047660		2.1/2"	2"	30.20
NPT62048976		3"	2.1/2"	44.30



Plug - zeskant - NPT male

	RVSK	NPT	€
Fittingen			
NPT62181000		1/8"	2.10
NPT62181300		1/4"	2.25
NPT62181700		3/8"	2.35
NPT62182100		1/2"	3.35
NPT62182700		3/4"	5.00
NPT62183200		1"	7.10
NPT62184200		1.1/4"	10.30
NPT62184800		1.1/2"	12.95
NPT62186000		2"	21.40
NPT62187600		2.1/2"	36.10
NPT62188900		3"	59.05
NPT62180114		4"	78.90

Diversen



Sok - NPT female

	RVSK	NPT	€
Fittingen			
NPT62061010		1/8"	2.65
NPT62061313		1/4"	2.65
NPT62061717		3/8"	2.90
NPT62062121		1/2"	3.55
NPT62062727		3/4"	5.50
NPT62063232		1"	8.85
NPT62064242		1.1/4"	11.90
NPT62064848		1.1/2"	16.45
NPT62066060		2"	24.55
NPT62067676		2.1/2"	48.90
NPT62068989		3"	61.25
NPT62060114		4"	94.20

Water, Gas, Sanitair, Verwarming

Voor verschillende types slangpilaren in roestvast staal zie hoofdstuk 14



Lasfittingen - RVS AISI-316



Lasnippel - BSPT male

RVSK	BSPT	L mm	€
WN-18	1/8"	20	2.25
WN-18X30	1/8"	30	2.00
WN-14	1/4"	20	3.85
WN14X30	1/4"	30	2.20
WN-38	3/8"	30	2.45
WN-12	1/2"	35	3.05
WN-34	3/4"	40	3.75
WN-1	1"	40	5.05
WN-114	1.1/4"	50	8.35
WN-112	1.1/2"	50	10.05
WN-2	2"	50	13.35



Driedelige laskoppeling - bolconisch dichtend

RVSK	€
WHU-18	1/8" 8.95
WHU-14	1/4" 9.20
WHU-38	3/8" 11.60
WHU-12	1/2" 11.60
WHU-34	3/4" 15.85
WHU-1	1" 23.80
WHU-114	1.1/4" 31.00
WHU-112	1.1/2" 40.35
WHU-2	2" 54.30



Driedelige koppeling - bolconisch dichtend - las x BSP female

RVSK	BSPF	€
WMFU-18	1/8"	9.10
WMFU-14	1/4"	9.20
WMFU-38	3/8"	10.05
WMFU-12	1/2"	11.60
WMFU-34	3/4"	16.15
WMFU-1	1"	22.60
WMFU-114	1.1/4"	29.50
WMFU-112	1.1/2"	41.45
WMFU-2	2"	55.80



Lasbocht 45°

RVSK	ID mm	€
SBW1-12	1/2"	4.90
SBW1-34	3/4"	5.70
SBW1-1	1"	8.75
SBW1-114	1.1/4"	10.10
SBW1-112	1.1/2"	15.40
SBW1-2	2"	21.05



Lasbocht 90°

RVSK	ID mm	€
SBW2-12	1/2"	7.20
SBW2-34	3/4"	8.75
SBW2-1	1"	11.40
SBW2-114	1.1/4"	15.10
SBW2-112	1.1/2"	20.45
SBW2-2	2"	32.70



U-lasbocht

RVSK	ID mm	€
SBW3-12	1/2"	40.35
SBW3-34	3/4"	49.15
SBW3-1	1"	64.10
SBW3-114	1.1/4"	85.95
SBW3-112	1.1/2"	115.70
SBW3-2	2"	184.60



Las tee

RVSK	ID mm	€
SBW4-12	1/2"	12.90
SBW4-34	3/4"	15.75
SBW4-1	1"	23.70
SBW4-114	1.1/4"	33.45
SBW4-112	1.1/2"	45.25
SBW4-2	2"	57.65



Lasverloop tee

RVSK	ID A mm	ID B mm	€
SBW5-12-34	1/2"	3/4"	14.10
SBW5-112-114	1.1/2"	1.1/4"	49.95
SBW5-2-12	2"	1/2"	63.40
SBW5-2-114	2"	1.1/4"	63.40
SBW5-212-112	2.1/2"	1.1/2"	98.00
SBW5-3-2	3"	2"	130.20



Laskap

RVSK	ID mm	€
SBW6-12	1/2"	11.80
SBW6-34	3/4"	11.80
SBW6-1	1"	11.80
SBW6-114	1.1/4"	12.35
SBW6-112	1.1/2"	13.05
SBW6-2	2"	13.95



Lasverloop concentrisch

RVSK	ID A mm	ID B mm	€
SBW7-34-12	3/4"	1/2"	7.40
SBW7-114-34	1.1/4"	3/4"	13.15
SBW7-112-12	1.1/2"	1/2"	18.05
SBW7-112-1	1.1/2"	1"	19.85
SBW7-112-114	1.1/2"	1.1/4"	18.90
SBW7-2-1	2"	1"	23.70
SBW7-2-114	2"	1.1/4"	22.55
SBW7-2-112	2"	1.1/2"	18.20
SBW7-212-114	2.1/2"	1.1/4"	36.15
SBW7-212-112	2.1/2"	1.1/2"	39.85
SBW7-212-2	2.1/2"	2"	34.45

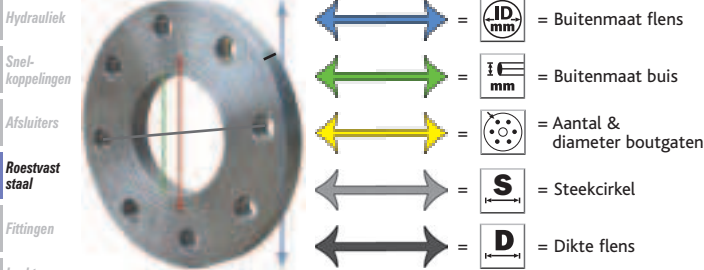


Lasverloop excentrisch

RVSK	ID A mm	ID B mm	€
SBW8-112-12	1.1/2"	1/2"	19.85
SBW8-112-34	1.1/2"	3/4"	16.20
SBW8-112-12	1.1/2"	1"	19.85
SBW8-112-114	1.1/2"	1.1/4"	18.90
SBW8-2-114	2"	1.1/4"	19.25
SBW8-212-112	2.1/2"	1.1/2"	34.20
SBW8-3-2	3"	2"	44.10

- Hydrauliek
- Snelkoppelingen
- Afsluiters
- Roeststaal
- Fittingen
- Luchtconditionering
- Gereedschap
- Vacuümtechniek
- Pneumatiek
- Onderdelen compressoren
- Diversen
- Malleabele fittingen & Staal
- Ringleidingssystemen
- Slangen
- Water, Gas, Sanitair, Verwarming

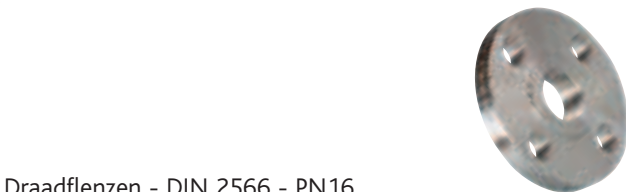
4 Flenzen volgens DIN - RVS AISI-316



- Hydrauliek
- Snelkoppelingen
- Afsluiters
- Roestvast staal
- Fittingen
- Luchtconditionering
- Gereedschap
- Vacuumtechniek
- Pneumatiek
- Onderdelen compressoren
- Diversen
- Malleabele fittingen & Staal
- Ringleidingssystemen
- Slangen
- Water, Gas, Sanitair, Verwarming

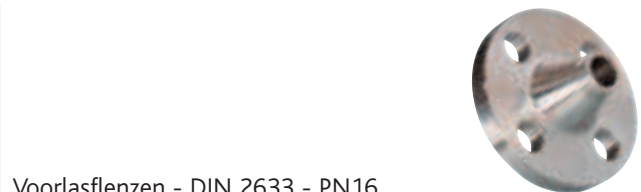
Topkwaliteit voor een breed scala aan toepassingen binnen de chemische en petrochemische industrie, offshore etc.

- Draadflenzen RVS AISI-316, volgens DIN normering 2566
- Voorlasflenzen RVS AISI-316, volgens DIN normering 2633
- Vlakke lasflenzen RVS AISI-316, volgens DIN normering 2576
- Blindflenzen RVS AISI-316, volgens DIN normering 2527



Draadflenzen - DIN 2566 - PN16

FLAS	S	D	ID	iE	ID (mm)	iE (mm)	€
SSFT-DN015-16	65	14	1/2"	95	21.3	4 x 14mm	23.50
SSFT-DN020-16	75	16	3/4"	105	26.9	4 x 14mm	35.10
SSFT-DN025-16	85	16	1"	115	33.7	4 x 14mm	42.50
SSFT-DN032-16	100	16	1.1/4"	140	42.4	4 x 18mm	61.85
SSFT-DN040-16	110	16	1.1/2"	150	48.3	4 x 18mm	68.75
SSFT-DN050-16	125	18	2"	165	60.3	4 x 18mm	93.90
SSFT-DN065-16	145	18	2.1/2"	185	76.1	4 x 18mm	119.00
SSFT-DN080-16	160	20	3"	200	88.9	8 x 18mm	154.25
SSFT-DN100-16	180	20	4"	220	114.3	8 x 18mm	167.30



Voorlasflenzen - DIN 2633 - PN16

FLAS	S	D	ID	iE	ID (mm)	iE (mm)	€
SSFW-DN015-16	65	14	95	21.3	4 x 14mm	27.15	
SSFW-DN020-16	75	16	105	26.9	4 x 14mm	39.70	
SSFW-DN025-16	85	16	115	33.7	4 x 14mm	47.60	
SSFW-DN032-16	100	16	140	42.4	4 x 18mm	70.60	
SSFW-DN040-16	110	16	150	48.3	4 x 18mm	77.70	
SSFW-DN050-16	125	18	165	60.3	4 x 18mm	105.60	
SSFW-DN065-16	145	18	185	76.1	4 x 18mm	129.40	
SSFW-DN080-16	160	20	200	88.9	8 x 18mm	156.45	
SSFW-DN100-16	180	20	220	114.3	8 x 18mm	195.25	
SSFW-DN125-16	210	22	250	139.7	8 x 18mm	266.30	
SSFW-DN150-16	240	22	285	168.3	8 x 22mm	327.50	
SSFW-DN200-16	295	24	340	219.1	12 x 22mm	464.90	



Blindflenzen - DIN 2527 - PN16

FLAS	S	D	ID	ID (mm)	€	
SSFB-DN015-16	65	14	16	95	4 x 14mm	24.05
SSFB-DN020-16	75	16	16	105	4 x 14mm	33.65
SSFB-DN025-16	85	16	16	115	4 x 14mm	41.00
SSFB-DN032-16	100	16	16	140	4 x 18mm	59.95
SSFB-DN040-16	110	16	16	150	4 x 18mm	69.60
SSFB-DN050-16	125	18	16	165	4 x 18mm	95.95
SSFB-DN065-16	145	18	16	185	4 x 18mm	115.75
SSFB-DN080-16	160	20	16	200	8 x 18mm	102.60
SSFB-DN100-16	180	20	16	220	8 x 18mm	178.75
SSFB-DN125-16	210	22	16	250	8 x 18mm	266.40
SSFB-DN150-16	240	22	16	285	8 x 22mm	329.05

Vlakke/overschuif lasflenzen - DIN 2576 - PN16

FLAS	S	D	ID	iE	ID (mm)	iE (mm)	€
SSFS-DN020-16	75	16	16	105	26.9	4 x 14mm	31.30
SSFS-DN025-16	85	16	16	115	33.7	4 x 14mm	37.00
SSFS-DN032-16	100	16	16	140	42.4	4 x 18mm	54.05
SSFS-DN040-16	110	16	16	150	48.3	4 x 18mm	62.00
SSFS-DN050-16	125	18	16	165	60.3	4 x 18mm	82.30
SSFS-DN065-16	145	18	16	185	76.1	4 x 18mm	94.90
SSFS-DN080-16	160	20	16	200	88.9	8 x 18mm	119.80
SSFS-DN100-16	180	20	16	220	114.3	8 x 18mm	127.50
SSFS-DN125-16	210	22	16	250	139.7	8 x 18mm	172.65
SSFS-DN200-16	295	24	16	340	219.1	12 x 22mm	294.50

Blindflenzen - DIN 2527 - PN10

FLAS	S	D	ID	ID (mm)	€	
SSFB-DN080-10	160	20	10	200	4 x 18mm	135.80
SSFB-DN200-10	295	24	10	340	8 x 22mm	634.95
SSFB-DN250-10	350	26	10	395	12 x 22mm	953.85
SSFB-DN300-10	400	26	10	445	12 x 22mm	1318.30
SSFB-DN350-10	460	26	10	505	16 x 22mm	2054.50
SSFB-DN400-10	515	26	10	565	16 x 26mm	2710.00
SSFB-DN500-10	620	28	10	670	20 x 26mm	4379.15

Vlakke/overschuif lasflenzen - DIN 2576 - PN10

FLAS	S	D	ID	iE	ID (mm)	iE (mm)	€
SSFS-DN080-10	160	20	10	200	88.9	4 x 18mm	119.80
SSFS-DN200-10	295	24	10	350	219.1	8 x 22mm	294.50
SSFS-DN250-10	350	26	10	395	273	12 x 22mm	376.50
SSFS-DN300-10	400	26	10	445	323.9	12 x 22mm	436.55
SSFS-DN400-10	515	32	10	565	406.4	16 x 26mm	869.45
SSFS-DN450-10	565	26	10	615	457	20 x 27mm	1255.20
SSFS-DN500-10	620	26	10	670	508	20 x 27mm	1449.15



Kwaliteit en veelzijdigheid in roestvast staal!



** DET NORSKE VERITAS **

Hydrauliek

Snelkoppelingen

Afsluiters

Roestvast staal

Fittingen

Luchtconditionering

Gereedschap

Vacuumtechniek

Pneumatiek

Onderdelen compressoren

Diversen

Malleabele fittingen & Staal

Ringleidingssystemen

Slangen

Water, Gas, Sanitair, Verwarming

Materiaal: RVS AISI-316 / DIN 4401 / ASME-SA-182 316.
Topkwaliteit voor industrie, offshore, scheepvaart etc.



Temperatuur koppeling: 400°C (daarboven vermindert de werkdruk)

Temperatuur VITON seal: -25°C tot +200°C

Temperatuur NBR seal: -25°C tot +100°C

Koppelingen worden standaard met NBR EOLASTIC seal geleverd.



Serie	Maat in mm	Werkdruk in bar*
L	6 t/m 15	250
L	18 t/m 22	160
L	28	100
S	6 t/m 14	630
S	16 t/m 25	400

*Werkdruk is gebaseerd op de werkdruk van de buis.

Rechte inschroefkoppeling
 DIN 2353 - BSP male met O-ring/ L



GE-6L-2EO	6	1/8"	7.60
GE-6L-4EO	6	1/4"	9.85
GE-8L-2EO	8	1/8"	9.10
GE-8L-4EO	8	1/4"	9.00
GE-8L-6EO	8	3/8"	12.75
GE-10L-4EO	10	1/4"	9.90
GE-10L-6EO	10	3/8"	14.10
GE-10L-8EO	10	1/2"	18.60
GE-12L-4EO	12	1/4"	14.30
GE-12L-6EO	12	3/8"	11.65
GE-12L-8EO	12	1/2"	17.80
GE-15L-6EO	15	3/8"	17.50
GE-15L-8EO	15	1/2"	16.05
GE-18L-8EO	18	1/2"	20.35
GE-18L-12EO	18	3/4"	28.70
GE-22L-12EO	22	3/4"	27.15
GE-28L-16EO	28	1"	42.70

63010617*	6	3/8"	16.30
63010821*	8	1/2"	17.50

*Uitlooppduct

Rechte inschroefkoppeling
 DIN 2353 - BSP male met O-ring/ S



GE-6S-4EO	6	1/4"	10.35
GE-8S-4EO	8	1/4"	10.00
GE-8S-6EO	8	3/8"	11.20
GE-10S-4EO	10	1/4"	12.65
GE-10S-6EO	10	3/8"	12.30
GE-10S-8EO	10	1/2"	16.95
GE-12S-4EO	12	1/4"	14.20
GE-12S-6EO	12	3/8"	13.20
GE-12S-8EO	12	1/2"	18.70
GE-14S-8EO	14	1/2"	18.70
GE-16S-8EO	16	1/2"	23.30
GE-16S-6EO	16	3/8"	23.40
GE-16S-12EO	16	3/4"	29.35
GE-20S-12EO	20	3/4"	30.00
GE-25S-8EO	25	1/2"	51.50
GE-25S-16EO	25	1"	49.60



Rechte opschroefkoppeling
 DIN 2353 - BSP female/ L



GAI-6L-2RG	6	1/8"	11.45
GAI-8L-4RG	8	1/4"	15.05
GAI-8L-6RG	8	3/8"	17.25
GAI-8L-8RG	8	1/2"	22.00
GAI-10L-4RG	10	1/4"	15.05
GAI-10L-6RG	10	3/8"	18.25
GAI-10L-8RG	10	1/2"	22.55
GAI-12L-6RG	12	3/8"	17.70
GAI-12L-8RG	12	1/2"	20.55
GAI-15L-8RG	15	1/2"	23.65
GAI-18L-8RG	18	1/2"	28.40
GAI-22L-12RG	22	3/4"	36.50
GAI-28L-16RG	28	1"	51.50

63041213*	12	1/4"	17.70
-----------	----	------	-------

*Uitlooppduct

Rechte opschroefkoppeling
 DIN 2353 - BSP female/ S



GAI-6S-4RG	6	1/4"	15.20
GAI-8S-4RG	8	1/4"	15.50
GAI-10S-6RG	10	3/8"	20.45
GAI-12S-6RG	12	3/8"	21.20
GAI-14S-8RG	14	1/2"	26.70
GAI-16S-8RG	16	1/2"	28.40
GAI-20S-12RG	20	3/4"	41.00
GAI-25S-16RG	25	1"	57.10



Rechte inschroefkoppeling
 DIN 2353 - NPT male/ L



GE-6L-2N	6	1/8"	9.55
GE-6L-4N	6	1/4"	9.90
GE-8L-4N	8	1/4"	10.65
GE-10L-4N	10	1/4"	12.65
GE-10L-6N	10	3/8"	14.60
GE-12L-4N	12	1/4"	14.95
GE-12L-6N	12	3/8"	15.60
GE-12L-8N	12	1/2"	16.40
GE-15L-8N	15	1/2"	20.45
GE-18L-8N	18	1/2"	26.70
GE-22L-12N	22	3/4"	34.20
GE-28L-16N	28	1"	49.60

Rechte inschroefkoppeling
 DIN 2353 - NPT male/ S



GE-6S-4N	6	1/4"	11.00
GE-8S-4N	8	1/4"	12.85
GE-10S-4N	10	1/4"	14.85
GE-10S-6N	10	3/8"	15.30
GE-12S-4N	12	1/4"	16.60
GE-12S-6N	12	3/8"	17.50
GE-12S-8N	12	1/2"	16.70
GE-14S-8N	14	1/2"	20.45
GE-16S-8N	16	1/2"	27.95
GE-20S-12N	20	1/2"	35.00
GE-25S-16N	25	1"	55.45

Rechte inschroefkoppeling
 DIN 2353 - BSPT male/ L



GE-6L-2RT	6	1/8"	9.90
GE-8L-4RT	8	1/4"	9.90
GE-10L-4RT	10	1/4"	11.45
GE-12L-4RT	12	1/4"	13.95
GE-12L-6RT	12	3/8"	13.95
GE-12L-8RT	12	1/2"	14.85
GE-15L-6RT	15	3/8"	17.90
GE-15L-8RT	15	1/2"	17.90
GE-18L-8RT	18	1/2"	23.30
GE-22L-12RT	22	3/4"	31.35

63000817*	8	3/8"	11.45
63001021*	10	1/2"	16.60

*Uitlooppduct

Snijringkoppelingen - DIN 2353 - RVS AISI-316



4



Knie inschroefkoppeling
DIN 2353 - BSPT male/ L

RVSS	OD mm	BSPT	€
WE6L-2RT	6	1/8"	10.45
WE8L-4RT	8	1/4"	13.10
WE10L-4RT	10	1/4"	14.40
WE12L-6RT	12	3/8"	16.05
WE15L-8RT	15	1/2"	21.90
WE18L-8RT	18	1/2"	30.70

Knie inschroefkoppeling
DIN 2353 - BSPT male/ S

RVSS	OD mm	BSPT	€
WE6S-4RT	6	1/4"	13.85
WE8S-4RT	8	1/4"	16.80
WE10S-6RT	10	3/8"	16.15
WE12S-6RT	12	3/8"	19.45
WE14S-8RT	14	1/2"	26.70
WE16S-8RT	16	1/2"	38.40

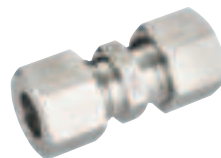
Knie inschroefkoppeling
DIN 2353 - NPT male/ L

RVSS	OD mm	NPTF	€
WE6L-2N	6	1/8"	15.70
WE8L-4N	8	1/4"	18.50
WE10L-4N	10	1/4"	21.45
WE12L-6N	12	3/8"	23.10
WE15L-8N	15	1/2"	29.15
WE18L-8N	18	1/2"	39.80
WE22L-12N	22	3/4"	49.05
WE28L-16N	28	1"	92.30
63050818*	8	3/8"	22.55
63051018*	10	3/8"	22.55
63051022*	10	1/2"	25.50
63051214*	12	1/4"	23.10

*Uitlooppduct

Knie inschroefkoppeling
DIN 2353 - NPT male/ S

RVSS	OD mm	NPTF	€
WE6S-4N	6	1/4"	17.15
WE8S-4N	8	1/4"	20.70
WE10S-6N	10	3/8"	22.30
WE12S-6N	12	3/8"	27.40
WE14S-8N	14	1/2"	30.60
WE16S-8N	16	1/2"	42.25
WE20S-12N	20	3/4"	49.60
WE25S-16N	25	1"	109.35

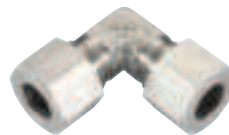


Rechte koppeling DIN 2353/ L

RVSS	OD mm	€
G6-UL	6	7.60
G8-UL	8	9.55
G10-UL	10	11.75
G12-UL	12	13.50
G15-UL	15	17.90
G18-UL	18	26.70
G22-UL	22	34.75
G28-UL	28	55.20

Rechte koppeling DIN 2353/ S

RVSS	OD mm	€
G6-US	6	9.55
G8-US	8	11.30
G10-US	10	14.30
G12-US	12	15.95
G14-US	14	20.10
G16-US	16	26.60
G20-US	20	37.95
G25-US	25	63.00



Kniekoppeling DIN 2353/ L

RVSS	OD mm	€
W6-UCL	6	14.85
W8-UCL	8	15.60
W10-UCL	10	18.25
W12-UCL	12	20.90
W15-UCL	15	27.50
W18-UCL	18	39.40
W22-UCL	22	49.95
W28-UCL	28	92.30

Kniekoppeling DIN 2353/ S

RVSS	OD mm	€
W6-UES	6	16.30
W8-UES	8	18.70
W10-UES	10	22.10
W12-UES	12	25.20
W14-UES	14	30.35
W16-UES	16	39.80
W20-UES	20	53.25
W25-UES	25	101.95



Tee koppeling DIN 2353/ L

RVSS	OD mm	€
T6-UTL	6	20.55
T8-UTL	8	22.00
T10-UTL	10	25.40
T12-UTL	12	30.15
T15-UTL	15	42.80
T18-UTL	18	58.30
T22-UTL	22	82.50
T28-UTL	28	128.80

Tee koppeling DIN 2353/ S

RVSS	OD mm	€
T6-UTS	6	22.55
T8-UTS	8	24.75
T10-UTS	10	30.60
T12-UTS	12	37.60
T14-UTS	14	41.60
T16-UTS	16	58.75
T20-UTS	20	83.60
T25-UTS	25	138.70



Kruiskoppeling DIN 2353/ L

RVSS	OD mm	€
K6-UCL	6	38.60
K8-UCL	8	42.10
K10-UCL	10	53.90
K12-UCL	12	57.40
K15-UCL	15	73.90
K18-UCL	18	106.90
K22-UCL	22	143.90
K28-UCL	28	197.80

Kruiskoppeling DIN 2353/ S

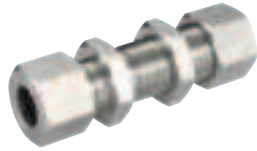
RVSS	OD mm	€
K6-UCS	6	42.80
K8-UCS	8	54.90
K10-UCS	10	60.70
K12-UCS	12	71.40
K14-UCS	14	75.35
K16-UCS	16	102.30
K20-UCS	20	142.35
K25-UCS	25	234.20

Hydrauliek
Snelkoppelingen
Afsluiters
Roestvast staal
Fittingen
Luchtconditionering
Gereedschap
Vacuumtechniek
Pneumatiek
Onderdelen compressoren
Diversen
Malleabele fittingen & Staal
Ringleidingssystemen
Slangen
Water, Gas, Sanitair, Verwarming

4 Snijringkoppelingen - DIN 2353 - RVS AISI-316



Hydrauliek
Snelkoppelingen
Afsluiters



Roestvast staal Rechte schotkoppeling
DIN 2353/ L

Fittingen	RVSS	OD mm	€
SV-6L	6	16.05	
SV-8L	8	18.90	
SV-10L	10	23.55	
SV-12L	12	25.75	
SV-15L	15	33.30	
SV-18L	18	51.70	
SV-22L	22	65.55	
SV-28L	28	92.30	

Rechte schotkoppeling
DIN 2353/ S

Onderdelen compressoren	RVSS	OD mm	€
SV-6S	6	21.10	
SV-8S	8	24.40	
SV-10S	10	27.95	
SV-12S	12	30.00	
SV-14S	14	43.80	
SV-16S	16	51.35	
SV-20S	20	75.35	
SV-25S	25	114.20	

Water, Gas, Sanitair, Verwarming



Las schotkoppeling
DIN 2353/ L

Fittingen	RVSS	OD mm	€
ESV-6L-FT	6	17.25	
ESV-8L-FT	8	18.80	
ESV-10L-FT	10	22.30	
ESV-12L-FT	12	24.95	
ESV-15L-FT	15	35.85	
ESV-18L-FT	18	47.20	
ESV-20L-FT	20	70.50	
ESV-28L-FT	28	89.85	

Las schotkoppeling
DIN 2353/ L

Fittingen	RVSS	OD mm	€
ESV-6S-FT	6	19.90	
ESV-8S-FT	8	22.75	
ESV-10S-FT	10	26.70	
ESV-12S-FT	12	31.25	
ESV-14S-FT	14	43.55	
ESV-16S-FT	16	52.80	
ESV-20S-FT	20	87.45	
ESV-25S-FT	25	94.70	



Knie schotkoppeling
DIN 2353/ L

Fittingen	RVSS	OD mm	€
WSV-6L-FT	6	29.60	
WSV-8L-FT	8	32.55	
WSV-10L-FT	10	38.05	
WSV-12L-FT	12	41.60	
WSV-15L-FT	15	54.65	
WSV-18L-FT	18	72.90	
WSV-22L-FT	22	99.65	
WSV-28L-FT	28	138.50	

Knie schotkoppeling
DIN 2353/ S

Fittingen	RVSS	OD mm	€
WSV-6S-FT	6	36.75	
WSV-8S-FT	8	37.70	
WSV-10S-FT	10	39.90	
WSV-12S-FT	12	44.20	
WSV-14S-FT	14	55.45	
WSV-16S-FT	16	63.15	
WSV-20S-FT	20	104.50	
WSV-25S-FT	25	157.95	

Rechte laskoppeling
DIN 2353/ L

Fittingen	RVSS	OD mm	€
AS-6L	6	7.80	
AS-8L	8	8.60	
AS-10L	10	10.35	
AS-12L	12	10.65	
AS-15L	15	13.50	
AS-18L	18	22.20	
AS-22L	22	29.60	
AS-28L	28	43.20	

Rechte laskoppeling
DIN 2353/ S

Fittingen	RVSS	OD mm	€
AS-6S	6	10.20	
AS-8S	8	11.65	
AS-10S	10	12.75	
AS-12S	12	12.85	
AS-14S	14	17.15	
AS-16S	16	22.65	
AS-20S	20	31.55	
AS-25S	25	48.85	



Rechte inschroefkoppeling
DIN 2353 - metrisch parallel
male (form B)/ L

Fittingen	RVSS	OD mm	€
GE-6L-10MPB	6	M10 x 1	7.60
GE-8L-12MPB	8	M12 x 1.5	9.45
GE-8L-18MPB	8	M18 x 1.5	16.05
GE-10L-14MPB	10	M14 x 1.5	9.90
GE-10L-16MPB	10	M16 x 1.5	14.95
GE-10L-18MPB	10	M18 x 1.5	15.70
GE-10L-22MPB	10	M22 x 1.5	21.80
GE-12L-14MPB	12	M14 x 1.5	14.60
GE-12L-16MPB	12	M16 x 1.5	12.30
GE-12L-18MPB	12	M18 x 1.5	16.15
GE-12L-22MPB	12	M22 x 1.5	22.10
GE-15L-16MPB	15	M16 x 1.5	16.40
GE-15L-18MPB	15	M18 x 1.5	15.50
GE-15L-22MPB	15	M22 x 1.5	22.10
GE-18L-18MPB	18	M18 x 1.5	22.65
GE-18L-22MPB	18	M22 x 1.5	21.55
GE-22L-22MPB	22	M22 x 1.5	33.75
GE-22L-26MPB	22	M26 x 1.5	29.35
GE-28L-33MPB	28	M33 x 2	43.10

Rechte inschroefkoppeling
DIN 2353 - metrisch
parallel male (form B)/ S

Fittingen	RVSS	OD mm	€
GE-6S-12MPB	6	M12 x 1.5	11.10
GE-8S-14MPB	8	M14 x 1.5	12.65
GE-10S-16MPB	10	M16 x 1.5	13.65
GE-12S-18MPB	12	M18 x 1.5	14.40
GE-12S-22MPB	12	M22 x 1.5	17.15
GE-14S-20MPB	14	M20 x 1.5	17.80
GE-16S-18MPB	16	M18 x 1.5	23.85
GE-16S-22MPB	16	M22 x 1.5	21.90
GE-20S-27MPB	20	M27 x 2	30.90
GE-25S-33MPB	25	M33 x 2	49.05

Snijringkoppelingen - DIN 2353 - RVS AISI-316



Standpijp verloopkoppeling
DIN 2353/ L

	OD A mm	OD B mm	€
KOR-8L-6L	8	6	14.30
KOR-10L-6L	10	6	16.30
KOR-10L-8L	10	8	17.05
KOR-12L-6L	12	6	19.00
KOR-12L-8L	12	8	19.70
KOR-12L-10L	12	10	20.35
KOR-15L-6L	15	6	22.00
KOR-15L-8L	15	8	24.85
KOR-15L-10L	15	10	25.40
KOR-15L-12L	15	12	26.60
KOR-18L-6L	18	6	30.15
KOR-18L-8L	18	8	30.90
KOR-18L-10L	18	10	31.70
KOR-18L-12L	18	12	32.65
KOR-18L-15L	18	15	35.75
KOR-22L-6L	22	6	40.80
KOR-22L-8L	22	8	41.45
KOR-22L-10L	22	10	42.35
KOR-22L-12L	22	12	43.45
KOR-22L-15L	22	15	46.40
KOR-22L-18L	22	18	49.15
KOR-28L-6L	28	6	55.75
KOR-28L-8L	28	8	56.40
KOR-28L-10L	28	10	57.30
KOR-28L-12L	28	12	58.50
KOR-28L-15L	28	15	61.70
KOR-28L-18L	28	18	64.55
KOR-28L-22L	28	22	68.85

Standpijp verloop DIN 2353/ L

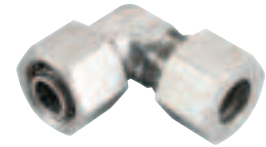
	OD A mm	OD B mm	€
KOR-8S-6S	8	6	16.60
KOR-10S-6S	10	6	19.90
KOR-10S-8S	10	8	20.25
KOR-12S-6S	12	6	21.35
KOR-12S-8S	12	8	21.90
KOR-12S-10S	12	10	24.40
KOR-14S-6S	14	6	25.60
KOR-14S-8S	14	8	26.20
KOR-14S-10S	14	10	27.40
KOR-14S-12S	14	12	29.50
KOR-16S-6S	16	6	29.60
KOR-16S-8S	16	8	30.35
KOR-16S-10S	16	10	31.45
KOR-16S-12S	16	12	32.35
KOR-16S-14S	16	14	39.05
KOR-20S-6S	20	6	43.80
KOR-20S-8S	20	8	44.30
KOR-20S-10S	20	10	45.55
KOR-20S-12S	20	12	46.75
KOR-20S-14S	20	14	49.15
KOR-20S-16S	20	16	59.30
KOR-25S-6S	25	6	69.75
KOR-25S-8S	25	8	70.30
KOR-25S-10S	25	10	71.40
KOR-25S-12S	25	12	72.05
KOR-25S-14S	25	14	74.70
KOR-25S-16S	25	16	77.00
KOR-25S-20S	25	20	83.40

Tee verloopkoppeling
DIN 2353/ L

	OD A mm	OD B mm	€
TR-6-8-6L	6	8	26.60
TR-8-6-8L	8	6	26.50
TR-6-10-6L	6	10	30.45
TR-8-10-8L	8	10	31.00
TR-10-6-10L	10	6	30.45
TR-10-8-10L	10	8	36.30
TR-10-10-6L	10	10	36.40
TR-8-12-8L	8	12	36.50
TR-12-6-12L	12	6	37.85
TR-12-8-8L	12	8	37.40
TR-12-8-12L	12	8	38.70
TR-12-10-10L	12	10	38.70
TR-12-10-12L	12	10	51.15
TR-12-12-10L	12	12	52.60
TR-10-15-10L	10	15	52.70
TR-12-15-12L	12	15	53.90
TR-15-6-15L	15	6	52.60
TR-15-10-15L	15	10	54.55
TR-15-12-12L	15	12	54.55
TR-15-12-15L	15	12	67.75
TR-15-15-12L	15	15	68.40
TR-12-18-12L	12	18	68.65
TR-18-10-18L	18	10	69.60
TR-18-12-18L	18	12	68.75
TR-18-15-18L	18	15	87.10
TR-18-18-10L	18	18	95.90
TR-22-10-22L	22	10	96.15
TR-22-12-22L	22	12	96.25
TR-22-15-15L	22	15	96.00
TR-22-15-22L	22	15	96.25
TR-22-18-18L	22	18	96.15
TR-22-18-22L	22	18	96.35
TR-22-22-18L	22	22	150.90
TR-28-10-28L	28	10	170.30
TR-28-12-28L	28	12	171.40
TR-28-15-28L	28	15	174.10
TR-28-18-28L	28	18	177.00
TR-28-22-22L	28	22	176.10
TR-28-22-28L	28	22	180.60

Tee verloopkoppeling DIN 2353/ S

	OD A mm	OD B mm	€
TR-10-6-10S	10	6	37.05
TR-12-8-8S	12	8	44.20
TR-12-8-12S	12	8	44.30
TR-12-10-12S	12	10	44.30
TR-12-16-12S	12	16	71.40
TR-16-6-16S	16	6	71.15
TR-16-8-16S	16	8	71.40
TR-16-10-16S	16	10	71.40
TR-16-12-16S	16	12	71.40
TR-16-20-16S	16	20	97.80
TR-20-10-20S	20	10	97.70
TR-20-12-20S	20	12	97.70
TR-20-16-20S	20	16	97.90
TR-20-25-20S	20	25	183.50
TR-25-16-25S	25	16	188.00
TR-25-20-25S	25	20	192.80



Verstelbare kniekoppeling -
DIN 2353/ L

	OD mm	€
EVW-6L	6	16.80
EVW-8L	8	18.90
EVW-10L	10	24.00
EVW-12L	12	28.40
EVW-15L	15	40.90
EVW-18L	18	52.00
EVW-22L	22	76.55
EVW-28L	28	132.10

Verstelbare kniekoppeling -
DIN 2353/ S

	OD mm	€
EVW-6S	6	18.60
EVW-8S	8	22.55
EVW-10S	10	27.30
EVW-12S	12	35.20
EVW-14S	14	40.90
EVW-16S	16	50.90
EVW-20S	20	77.20
EVW-25S	25	143.45



Verstelbare tee koppeling
DIN 2353/ L

	OD mm	€
EVT-6L	6	26.95
EVT-8L	8	29.15
EVT-10L	10	32.80
EVT-12L	12	39.70
EVT-15L	15	56.65
EVT-18L	18	74.15
EVT-22L	22	95.05
EVT-28L	28	168.10

Verstelbare tee koppeling
DIN 2353/ S

	OD mm	€
EVT-6S	6	28.25
EVT-8S	8	32.90
EVT-10S	10	39.80
EVT-12S	12	46.30
EVT-14S	14	57.20
EVT-16S	16	74.80
EVT-20S	20	99.00
EVT-25S	25	184.80

Hydrauliek
Snelkoppelingen
Afsluiters
Roestvast staal
Fittingen
Luchtconditionering
Gereedschap
Vacuümtechniek
Pneumatiek
Onderdelen compressoren
Diversen
Malleabele fittingen & Staal
Ringleidingssystemen
Slangen
Water, Gas, Sanitair, Verwarming

4 Snijringkoppelingen - DIN 2353 - RVS AISI-316



Hydrauliek

Snelkoppelingen

Afsluiters

Roestvast staal

Fittingen

Luchtconditionering

Gereedschap

Vacuumtechniek

Pneumatiek

Onderdelen compressoren

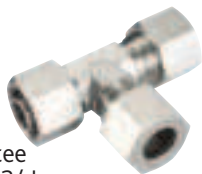
Diversen

Malleabele fittingen & Staal

Ringleidingssystemen

Slangen

Water, Gas, Sanitair, Verwarming

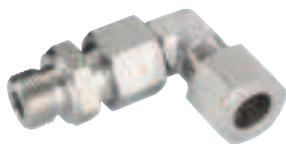


Verstelbare barrel tee koppeling DIN 2353/ L

	RVSS	OD mm	€
EVL-6L	6		26.95
EVL-8L	8		28.70
EVL-10L	10		32.80
EVL-12L	12		39.70
EVL-15L	15		56.65
EVL-18L	18		74.15
EVL-22L	22		97.35
EVL-28L	28		168.10

Verstelbare barrel tee koppeling DIN 2353/ S

	RVSS	OD mm	€
EVL-6S	6		28.25
EVL-8S	8		32.90
EVL-10S	10		39.80
EVL-12S	12		46.30
EVL-14S	14		57.30
EVL-16S	16		75.00
EVL-20S	20		99.30
EVL-25S	25		185.00



Verstelbare kniekoppeling DIN 2353 - metrisch parallel male (form B)/ L

	RVSS	OD mm	€
EVW-6L-10MPB	6	M10 x 1	21.20
EVW-8L-12MPB	8	M12 x 1.5	23.30
EVW-10L-14MPB	10	M14 x 1.5	29.05
EVW-12L-16MPB	12	M16 x 1.5	35.00
EVW-15L-18MPB	15	M18 x 1.5	45.20
EVW-18L-22MPB	18	M22 x 1.5	64.00
EVW-22L-26MPB	22	M26 x 1.5	79.20
EVW-28L-33MPB	28	M33 x 2	116.80

Verstelbare kniekoppeling DIN 2353 - metrisch parallel male (form B)/ S

	RVSS	OD mm	€
EVW-6S-12MPB	6	M12 x 1.5	27.30
EVW-8S-14MPB	8	M14 x 1.5	31.70
EVW-10S-16MPB	10	M16 x 1.5	36.10
EVW-12S-18MPB	12	M18 x 1.5	41.35
EVW-14S-20MPB	14	M20 x 1.5	49.95
EVW-16S-22MPB	16	M22 x 1.5	64.10
EVW-20S-27MPB	20	M27 x 2	81.95
EVW-25S-33MPB	25	M33 x 2	124.10



Verstelbare tee koppeling DIN 2353 - metrisch parallel male (form B)/ L

	RVSS	OD mm	€
EVT-6L-10MPB	6	M10 x 1	31.90
EVT-8L-12MPB	8	M12 x 1.5	35.30
EVT-10L-14MPB	10	M14 x 1.5	41.35
EVT-12L-16MPB	12	M16 x 1.5	49.60
EVT-15L-18MPB	15	M18 x 1.5	67.75
EVT-18L-22MPB	18	M22 x 1.5	87.45
EVT-22L-26MPB	22	M26 x 1.5	113.20
EVT-28L-33MPB	33	M33 x 2	201.40

Verstelbare tee koppeling DIN 2353 - metrisch parallel male (form B)/ S

	RVSS	OD mm	€
EVT-6S-12MPB	6	M12 x 1.5	34.20
EVT-8S-14MPB	8	M14 x 1.5	40.80
EVT-10S-16MPB	10	M16 x 1.5	49.95
EVT-12S-18MPB	12	M18 x 1.5	57.95
EVT-14S-20MPB	14	M20 x 1.5	59.85
EVT-16S-22MPB	16	M22 x 1.5	89.00
EVT-20S-27MPB	20	M27 x 2	126.30
EVT-25S-33MPB	25	M33 x 2	223.30



Verstelbare tee koppeling DIN 2353 - BSP male (form B)/ L

	RVSS	OD mm	€
EVT-6L-2RP	6	1/8"	31.80
EVT-8L-4RP	8	1/4"	36.30
EVT-10L-4RP	10	1/4"	40.60
EVT-12L-6RP	12	3/8"	49.40
EVT-15L-8RP	15	1/2"	69.30
EVT-18L-8RP	18	1/2"	87.20
EVT-22L-12RP	22	3/4"	114.20
EVT-28L-16RP	28	1"	201.40

Verstelbare tee koppeling DIN 2353 - BSP male (form B)/ S

	RVSS	OD mm	€
EVT-6S-4RP	6	1/4"	34.40
EVT-8S-4RP	8	1/4"	40.80
EVT-10S-6RP	10	3/8"	49.60
EVT-12S-6RP	12	3/8"	56.55
EVT-12S-8RP	12	1/2"	59.85
EVT-14S-8RP	14	1/2"	70.95
EVT-16S-8RP	16	1/2"	89.20
EVT-20S-12RP	20	3/4"	127.70
EVT-25S-16RP	25	1"	223.40



Verstelbare kniekoppeling DIN 2353 - BSP male (form B)/ L

	RVSS	OD mm	€
EVW-6L-2RP	6	1/8"	21.55
EVW-8L-4RP	8	1/4"	26.20
EVW-10L-4RP	10	1/4"	31.70
EVW-12L-6RP	12	3/8"	37.95
EVW-15L-8RP	15	1/2"	53.55
EVW-18L-8RP	18	1/2"	65.00
EVW-22L-12RP	22	3/4"	95.15
EVW-28L-16RP	28	1"	164.90

Verstelbare kniekoppeling DIN 2353 - BSP male (form B)/ S

	RVSS	OD mm	€
EVW-6S-4RP	6	1/4"	27.50
EVW-8S-4RP	8	1/4"	30.60
EVW-10S-6RP	10	3/8"	36.95
EVW-12S-6RP	12	3/8"	45.40
EVW-12S-8RP	12	1/2"	48.60
EVW-14S-8RP	14	1/2"	55.75
EVW-16S-8RP	16	1/2"	66.10
EVW-16S-12RP	16	3/4"	81.30
EVW-20S-12RP	20	3/4"	104.80
EVW-25S-16RP	25	1"	181.70



Verstelbare barrel tee koppeling DIN 2353 - metrisch parallel male (form B)/ L

	RVSS	OD mm	€
EVL-6L-10MPB	6	M10 x 1	31.90
EVL-8L-12MPB	8	M12 x 1.5	35.30
EVL-10L-14MPB	10	M14 x 1.5	41.35
EVL-12L-16MPB	12	M16 x 1.5	49.60
EVL-15L-18MPB	15	M18 x 1.5	67.75
EVL-18L-22MPB	18	M22 x 1.5	87.45
EVL-22L-26MPB	22	M26 x 1.5	113.20
EVL-28L-33MPB	28	M33 x 2	201.40

Verstelbare barrel tee koppeling DIN 2353 - metrisch parallel male (form B)/ S

	RVSS	OD mm	€
EVL-6S-12MPB	6	M12 x 1.5	34.20
EVL-8S-14MPB	8	M14 x 1.5	40.80
EVL-10S-16MPB	10	M16 x 1.5	49.95
EVL-12S-18MPB	12	M18 x 1.5	57.95
EVL-14S-20MPB	14	M20 x 1.5	59.85
EVL-16S-22MPB	16	M22 x 1.5	89.00
EVL-20S-27MPB	20	M27 x 2	126.30
EVL-25S-33MPB	25	M33 x 2	223.30

Snijringkoppelingen - DIN 2353 - RVS AISI-316



Verstelbare barrel tee koppeling DIN 2353 - BSP male (form B) / L

RVSS	OD mm	BSPP	€
EVL-6L-2RP	6	1/8"	31.80
EVL-8L-4RP	8	1/4"	36.30
EVL-10L-4RP	10	1/4"	40.60
EVL-12L-6RP	12	3/8"	49.40
EVL-15L-8RP	15	1/2"	69.30
EVL-18L-8RP	18	1/2"	87.20
EVL-22L-12RP	22	3/4"	114.20
EVL-28L-16RP	28	1"	201.40

Verstelbare barrel tee koppeling DIN 2353 - BSP male (form B) / S

RVSS	OD mm	BSPP	€
EVL-6S-4RP	6	1/4"	34.40
EVL-8S-4RP	8	1/4"	40.80
EVL-10S-6RP	10	3/8"	49.60
EVL-12S-6RP	12	3/8"	56.55
EVL-12S-8RP	12	1/2"	59.85
EVL-14S-8RP	14	1/2"	70.95
EVL-16S-8RP	16	1/2"	89.20
EVL-20S-12RP	20	3/4"	127.70
EVL-25S-16RP	25	1"	223.40



Standpijp DIN 2353 - metrisch parallel male met O-ring/ L

RVSS	OD mm	BSPP	€
EVGE-6L-10MEO	6	M10 x 1	10.55
EVGE-8L-12MEO	8	M12 x 1.5	12.55
EVGE-10L-14MEO	10	M14 x 1.5	14.20
EVGE-12L-16MEO	12	M16 x 1.5	16.50
EVGE-15L-18MEO	15	M18 x 1.5	21.20
EVGE-18L-22MEO	18	M22 x 1.5	27.95
EVGE-22L-26MEO	22	M26 x 1.5	37.95
EVGE-28L-33MEO	28	M33 x 2	57.20

Standpijp DIN 2353 - metrisch parallel male met O-ring/ S

RVSS	OD mm	BSPP	€
EVGE-6S-12MEO	6	M12 x 1.5	12.20
EVGE-8S-14MEO	8	M14 x 1.5	14.10
EVGE-10S-16MEO	10	M16 x 1.5	17.70
EVGE-12S-18MEO	12	M18 x 1.5	19.00
EVGE-14S-20MEO	14	M20 x 1.5	26.40
EVGE-16S-22MEO	16	M22 x 1.5	29.25
EVGE-20S-27MEO	20	M27 x 2	42.00
EVGE-25S-33MEO	25	M33 x 2	71.60

Standpijp DIN 2353 - BSP male met O-ring/ L

RVSS	OD mm	BSPP	€
EVGE-6L-2EO	6	1/8"	10.55
EVGE-8L-4EO	8	1/4"	13.20
EVGE-10L-4EO	10	1/4"	13.95
EVGE-12L-6EO	12	3/8"	17.15
EVGE-15L-8EO	15	1/2"	23.75
EVGE-18L-8EO	18	1/2"	30.80
EVGE-22L-12EO	22	3/4"	37.95
EVGE-28L-16EO	28	1"	57.20

Standpijp DIN 2353 - BSP male met O-ring/ S

RVSS	OD mm	BSPP	€
EVGE-6S-4EO	6	1/4"	12.65
EVGE-8S-4EO	8	1/4"	14.10
EVGE-10S-6EO	10	3/8"	16.80
EVGE-12S-6EO	12	3/8"	18.15
EVGE-12S-8EO	12	1/2"	21.55
EVGE-14S-8EO	14	1/2"	26.85
EVGE-16S-8EO	16	1/2"	29.25
EVGE-16S-12EO	16	3/4"	35.10
EVGE-20S-12EO	20	3/4"	42.00
EVGE-25S-16EO	25	1"	52.80



Rechte verloopkoppeling DIN 2353 - BSP male/female (form B)

RVSS	BSPP	BSPP	€
RI-2RP-4RG	1/8"	1/4"	9.00
RI-2RP-6RG	1/8"	3/8"	10.65
RI-4RP-2RG	1/4"	1/8"	9.45
RI-4RP-6RG	1/4"	3/8"	12.20
RI-4RP-8RG	1/4"	1/2"	16.05
RI-4RP-12RG	1/4"	3/4"	22.65
RI-6RP-2RG	3/8"	1/8"	10.45
RI-6RP-4RG	3/8"	1/4"	11.55
RI-6RP-8RG	3/8"	1/2"	15.85
RI-6RP-12RG	3/8"	3/4"	22.90
RI-8RP-2RG	1/2"	1/8"	11.75
RI-8RP-4RG	1/2"	1/4"	11.55
RI-8RP-6RG	1/2"	3/8"	13.40
RI-8RP-12RG	1/2"	3/4"	23.30
RI-8RP-16RG	1/2"	1"	35.75
RI-12RP-4RG	3/4"	1/4"	17.50
RI-12RP-6RG	3/4"	3/8"	17.50
RI-12RP-8RG	3/4"	1/2"	22.20
RI-12RP-16RG	3/4"	1"	36.30
RI-16RP-4RG	1"	1/4"	26.05
RI-16RP-6RG	1"	3/8"	26.70
RI-16RP-8RG	1"	1/2"	29.05
RI-16RP-12RG	1"	3/4"	34.20

Rechte verloopkoppeling DIN 2353 - BSP male/female met O-ring

RVSS	BSPP	BSPP	€
RI-2EO-4RG	1/8"	1/4"	9.55
RI-2EO-6RG	1/8"	3/8"	11.30
RI-4EO-2RG	1/4"	1/8"	10.00
RI-4EO-6RG	1/4"	3/8"	13.10
RI-4EO-8RG	1/4"	1/4"	16.95
RI-4EO-12RG	1/4"	3/4"	23.55
RI-6EO-2RG	3/8"	1/8"	10.90
RI-6EO-4RG	3/8"	1/4"	12.40
RI-6EO-8RG	3/8"	1/2"	15.85
RI-6EO-12RG	3/8"	3/4"	24.20
RI-8EO-2RG	1/2"	1/8"	12.40
RI-8EO-4RG	1/2"	1/4"	12.40
RI-8EO-6RG	1/2"	3/8"	14.30
RI-8EO-12RG	1/2"	3/4"	24.40
RI-8EO-16RG	1/2"	1"	36.95
RI-12EO-4RG	3/4"	1/4"	18.60
RI-12EO-6RG	3/4"	3/8"	18.60
RI-12EO-8RG	3/4"	1/2"	23.30
RI-12EO-16RG	3/4"	1"	37.40
RI-16EO-4RG	1"	1/4"	27.60
RI-16EO-6RG	1"	3/8"	28.25
RI-16EO-8RG	1"	1/2"	30.35
RI-16EO-12RG	1"	3/4"	35.75

- Hydrauliek
- Snelkoppelingen
- Afsluiters
- Roestvast staal
- Fittingen
- Luchtconditionering
- Gereedschap
- Vacuümtechniek
- Pneumatiek
- Onderdelen compressoren
- Diversen
- Malleabele fittingen & Staal
- Ringleidingssystemen
- Slangen
- Water, Gas, Sanitair, Verwarming

4 Snijringkoppelingen - DIN 2353 - RVS AISI-316



Hydrauliek
Snelkoppelingen
Afsluiters



Roestvast staal

Laskoppeling DIN 2353

Fittingen	RVSS	OD mm	DIA mm	€
ASK-108		10	8	14.95
ASK-107		10	7	14.95
ASK-106		10	6	14.95
ASK-129		12	9	17.60
ASK-128		12	8	17.60
ASK-127		12	7	17.60
ASK-1613		16	13	23.30
ASK-1612		16	12	23.30
ASK-1611		16	11	23.30
ASK-1610		16	10	23.30
ASK-2016		20	16	34.65
ASK-2015		20	15	34.65
ASK-2014		20	14	34.65
ASK-2012		20	12	34.65
ASK-2519		25	19	55.30
ASK-2517		25	17	55.30
ASK-2515		25	15	55.30

Ringleidingssystemen

Slangen

Water, Gas, Sanitair, Verwarming



Lasnippel DIN 2353

Fittingen	RVSS	OD mm	DIA mm	€
SKA-108		10	8	6.40
SKA-107		10	7	6.40
SKA-106		10	6	6.40
SKA-129		12	9	7.15
SKA-128		12	8	7.15
SKA-127		12	7	7.15
SKA-1613		16	13	9.80
SKA-1612		16	12	9.80
SKA-1611		16	11	9.80
SKA-1610		16	10	9.80
SKA-2016		20	16	13.30
SKA-2015		20	15	13.30
SKA-2014		20	14	13.30
SKA-2012		20	12	13.30
SKA-2519		25	19	19.25
SKA-2517		25	17	19.25
SKA-2515		25	15	19.25



Lasverloopenippel DIN 2353/ S

Fittingen	RVSS	OD A mm	OD B mm	€
SKAR-10-6		10	6	7.05
SKAR-10-8		10	8	7.05
SKAR-12-8		12	8	7.90
SKAR-12-10		12	10	7.90
SKAR-16-12		16	12	10.90
SKAR-20-12		20	12	14.30
SKAR-20-16		20	16	14.30
SKAR-25-16		25	16	20.80
SKAR-25-20		25	20	20.80
SKAR-25-15		25	15	20.80



Rechte verloopkoppeling DIN 2353/ L

Fittingen	RVSS	OD A mm	OD B mm	€
GR-8L-6L		8	6	13.10
GR-10L-6L		10	6	14.10
GR-10L-8L		10	8	16.05
GR-12L-6L		12	6	16.15
GR-12L-8L		12	8	17.50
GR-12L-10L		12	10	18.60
GR-15L-10L		15	10	23.10
GR-15L-12L		15	12	23.85
GR-18L-10L		18	10	32.45
GR-18L-12L		18	12	33.90
GR-18L-15L		18	15	35.95
GR-22L-12L		22	12	44.45
GR-22L-15L		22	15	44.45
GR-22L-18L		22	18	47.40
GR-28L-18L		28	18	73.90
GR-28L-22L		28	22	76.45
63141808L*		18	8	31.10

*Uitloopproduct

Rechte verloopkoppeling DIN 2353/ S

Fittingen	RVSS	OD A mm	OD B mm	€
GR-8S-6S		8	6	16.05
GR-10S-6S		10	6	18.15
GR-10S-8S		10	8	20.00
GR-12S-6S		12	6	21.00
GR-12S-8S		12	8	21.90
GR-12S-10S		12	10	21.90
GR-14S-10S		14	10	24.10
GR-14S-12S		14	12	26.50
GR-16S-12S		16	12	31.45
GR-16S-14S		16	14	35.95
GR-20S-10S		20	10	41.60
GR-20S-12S		20	12	43.80
GR-20S-16S		20	16	49.60
GR-25S-16S		25	16	77.75
GR-25S-20S		25	20	82.60
63141610S*		16	10	31.00

*Uitloopproduct

Snijringkoppelingen - DIN 2353 - RVS AISI-316



4



Inbusplug DIN 2353 - BSP male met O-ring

RVSS	BSPP	€
VSTI-2EO	1/8"	5.15
VSTI-4EO	1/4"	6.40
VSTI-6EO	3/8"	7.50
VSTI-8EO	1/2"	10.10
VSTI-12EO	3/4"	13.30
VSTI-16EO	1"	21.00

Inbusplug DIN 2353 - metrisch male met O-ring

RVSS	€
VSTI-10M	M10 x 1 5.15
VSTI-12M	M12 x 1.5 5.70
VSTI-14M	M14 x 1.5 6.40
VSTI-16M	M16 x 1.5 7.50
VSTI-18M	M18 x 1.5 8.15
VSTI-20M	M20 x 1.5 9.10
VSTI-22M	M22 x 1.5 10.10
VSTI-26M	M26 x 1.5 13.30
VSTI-27M	M27 x 2 13.50
VSTI-33M	M33 x 2 21.00

Inbusplug ISO 6149/DIN 3582-T3 - metrisch male met O-ring

RVSS	€
VSTI-10M-OR	M10 x 1 4.95
VSTI-12M-OR	M12 x 1.5 5.70
VSTI-14M-OR	M14 x 1.5 6.25
VSTI-16M-OR	M16 x 1.5 7.05
VSTI-18M-OR	M18 x 1.5 7.90
VSTI-20M-OR	M20 x 1.5 8.60
VSTI-22M-OR	M22 x 1.5 9.55
VSTI-26M-OR	M26 x 1.5 11.10
VSTI-27M-OR	M27 x 2 13.50
VSTI-33M-OR	M33 x 2 19.60



Eindkap DIN 2353/ L

RVSS	OD mm	€
ROV-6L	6	6.50
ROV-8L	8	7.35
ROV-10L	10	9.10
ROV-12L	12	11.20
ROV-15L	15	15.85
ROV-18L	18	21.55
ROV-22L	22	29.80
ROV-28L	28	44.30

Eindkap DIN 2353/ S

RVSS	OD mm	€
ROV-6S	6	7.70
ROV-8S	8	9.10
ROV-10S	10	11.75
ROV-12S	12	13.65
ROV-14S	14	16.80
ROV-16S	16	21.80
ROV-20S	20	33.20
ROV-25S	25	56.40



Afsluitstop DIN 2353 - met O-ring/ L

RVSS	OD mm	€
VKA-6L	6	4.70
VKA-8L	8	5.05
VKA-10L	10	5.80
VKA-12L	12	6.90
VKA-15L	15	7.70
VKA-18L	18	10.00
VKA-22L	22	13.65
VKA-28L	28	20.00

Afsluitstop DIN 2353 - met O-ring/ S

RVSS	OD mm	€
VKA-6S	6	4.70
VKA-8S	8	5.05
VKA-10S	10	5.80
VKA-12S	12	6.90
VKA-14S	14	7.80
VKA-16S	16	9.70
VKA-20S	20	13.00
VKA-25S	25	17.15



Wartelmoer DIN 2353/ L

RVSS	OD mm	€
M-6L-FT	6	1.65
M-8L-FT	8	2.00
M-10L-FT	10	2.30
M-12L-FT	12	2.65
M-15L-FT	15	3.60
M-18L-FT	18	6.70
M-22L-FT	22	8.15
M-28L-FT	28	11.65

Wartelmoer DIN 2353/ S

RVSS	OD mm	€
M-6S-FT	6	2.10
M-8S-FT	8	2.40
M-10S-FT	10	2.85
M-12S-FT	12	3.20
M-14S-FT	14	3.95
M-16S-FT	16	6.50
M-20S-FT	20	8.60
M-25S-FT	25	15.30



Snijring DIN 2353/ L

RVSS	OD mm	€
DPR-6L	6	0.55
DPR-8L	8	0.65
DPR-10L	10	0.90
DPR-12L	12	1.10
DPR-15L	15	1.30
DPR-18L	18	1.40
DPR-22L	22	2.40
DPR-28L	28	3.50

Snijring DIN 2353/ S

RVSS	OD mm	€
DPR-6S	6	0.55
DPR-8S	8	0.65
DPR-10S	10	0.90
DPR-12S	12	1.10
DPR-14S	14	1.20
DPR-16S	16	1.30
DPR-20S	20	2.25
DPR-25S	25	2.40

Hydrauliek
Snelkoppelingen
Afsluiters
Roestvast staal
Fittingen
Luchtconditionering
Gereedschap
Vacuümtechniek
Pneumatiek
Onderdelen compressoren
Diversen
Malleabele fittingen & Staal
Ringleidingssystemen
Slangen
Water, Gas, Sanitair, Verwarming

4 Snijringkoppelingen - hogedruk - RVS AISI-316



Hydrauliek
Snelkoppelingen
Afsluiters
Roestvast staal



Tee inschroefkoppeling DIN 2353 - BSPT male/ LL, L & S

Fittingen	RVSS	BSPT	bar	€
63060410	4LL x 1/8"	10	100	35.00
63060610	6L x 1/8"	14	315	35.95
63060810	8LL x 1/8"	14	100	38.05
63060813	8L x 1/4"	17	315	34.85
63061013	10L x 1/4"	19	315	38.20
63061017	10L x 3/8"	19	315	42.20
63061213	12L x 1/4"	22	315	42.80
63061217	12L x 3/8"	22	315	42.80
63061221	12L x 1/2"	22	315	49.05
63061421	14S x 1/2"	27	400	61.45
63061521	15L x 1/2"	27	315	58.50
63061621	16S x 1/2"	30	400	85.00
63061821	18L x 1/2"	32	315	85.00

Malleabele fittingen & Staal
Ringleidingssystemen
Slangen
Water, Gas, Sanitair, Verwarming



Steunhuls

RVSS	ID mm	L mm	€
63260400	4	17	2.25
63261000	10	15.5	3.30
63261200	12	17	3.25
63261300	13	17	4.55
63261400	14	17	3.85
63261500	15	18	4.70
63261600	16	18	4.10
63261800	18	20	5.70



Verloopring - BSP male/female met Viton seal

RVSS	BSPP A	BSPP B	bar	€
63181310	1/4"	1/8"	630	16.65
63181710	3/8"	1/8"	630	16.65
63182110	1/2"	1/8"	630	20.85
63182713	3/4"	1/4"	400	37.25
63182717	3/4"	3/8"	400	28.80
63183213	1"	1/4"	400	36.45
63183217	1"	3/8"	400	37.00
63183221	1"	1/2"	400	39.45

De artikelen op deze pagina zijn uitloopproducten.

Snijringkoppelingen twin ferrule (dubbele ring) - RVS AISI-316



** DET NORSE VERITAS **

Materiaal: RVS-AISI 316 / DIN 4401 / ASME-SA-182 316.

Topkwaliteit voor industrie, offshore, scheepvaart etc.
Normering certificaten zijn op aanvraag leverbaar.



Maat in mm



Werkdruk in bar (93°C)*



Wanddikte buis

3	1032	1
6	912	1.6
8	607	1.6
10	473	1.6
12	497	2
14	654	3
16	564	3
18	496	3
22	394	3
25	342	3



Temperatuur in °C



Factor

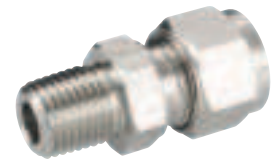
93	1
204	0.96
316	0.85
427	0.79
538	0.76
649	0.37



Rechte inschroefkoppeling - NPT male



	0292	OD mm	NPTF	€
MC-3-125N	3	1/8"	11.15	
MC-3-250N	3	1/4"	11.70	
MC-4-125N	4	1/8"	11.15	
MC-4-250N	4	1/4"	11.70	
MC-6-125N	6	1/8"	11.15	
MC-6-250N	6	1/4"	11.70	
MC-6-375N	6	3/8"	14.10	
MC-6-500N	6	1/2"	18.60	
MC-8-125N	8	1/8"	13.80	
MC-8-250N	8	1/4"	14.35	
MC-8-375N	8	3/8"	16.45	
MC-8-500N	8	1/2"	20.20	
MC-10-125N	10	1/8"	15.95	
MC-10-250N	10	1/4"	16.70	
MC-10-375N	10	3/8"	18.05	
MC-10-500N	10	1/2"	21.80	
MC-10-750N	10	3/4"	22.20	
MC-12-125N	12	1/8"	22.60	
MC-12-250N	12	1/4"	23.10	
MC-12-375N	12	3/8"	23.65	
MC-12-500N	12	1/2"	24.70	
MC-12-750N	12	3/4"	34.20	
MC-14-250N	14	1/4"	28.65	
MC-14-375N	14	3/8"	30.00	
MC-14-500N	14	1/2"	32.40	
MC-15-500N	15	1/2"	32.60	
MC-16-375N	16	3/8"	30.00	
MC-16-500N	16	1/2"	32.60	
MC-16-750N	16	3/4"	41.65	
MC-18-500N	18	1/2"	45.65	
MC-18-750N	18	3/4"	46.95	
MC-20-500N	20	1/2"	51.80	
MC-20-750N	20	3/4"	52.70	
MC-22-750N	22	3/4"	59.95	
MC-22-1000N	22	1"	67.65	
MC-25-500N	25	1/2"	74.25	
MC-25-750N	25	3/4"	74.25	
MC-25-1000N	25	1"	77.15	



Rechte inschroefkoppeling - BSPT male



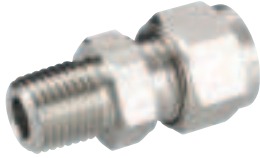
	0292	OD mm	BSPT	€
MC-3-125RT	3	1/8"	11.15	
MC-3-250RT	3	1/4"	11.70	
MC-4-125RT	4	1/8"	11.15	
MC-4-250RT	4	1/4"	11.70	
MC-6-125RT	6	1/8"	11.15	
MC-6-250RT	6	1/4"	11.70	
MC-6-375RT	6	3/8"	14.10	
MC-6-500RT	6	1/2"	18.60	
MC-8-125RT	8	1/8"	13.80	
MC-8-250RT	8	1/4"	14.35	
MC-8-375RT	8	3/8"	16.45	
MC-8-500RT	8	1/2"	20.20	
MC-10-125RT	10	1/8"	15.95	
MC-10-250RT	10	1/4"	16.70	
MC-10-375RT	10	3/8"	18.05	
MC-10-500RT	10	1/2"	21.80	
MC-12-125RT	12	1/8"	23.10	
MC-12-250RT	12	1/4"	23.10	
MC-12-375RT	12	3/8"	23.65	
MC-12-500RT	12	1/2"	24.70	
MC-12-750RT	12	3/4"	34.20	
MC-15-500RT	15	1/2"	32.40	
MC-16-250RT	16	1/4"	30.00	
MC-16-375RT	16	3/8"	30.00	
MC-16-500RT	16	1/2"	32.40	
MC-16-750RT	16	3/4"	41.65	
MC-18-500RT	18	1/2"	45.65	
MC-18-750RT	18	3/4"	46.95	
MC-20-500RT	20	1/2"	58.35	
MC-20-750RT	20	3/4"	59.95	
MC-22-750RT	22	3/4"	59.95	
MC-22-1000RT	22	1"	67.65	
MC-25-750RT	25	3/4"	74.25	
MC-25-1000RT	25	1"	77.15	

Hydrauliek
Snelkoppelingen
Afsluiters
Roestvast staal
Fittingen
Luchtconditionering
Gereedschap
Vacuümtechniek
Pneumatiek
Onderdelen compressoren
Diversen
Malleabele fittingen & Staal
Ringleidingssystemen
Slangen
Water, Gas, Sanitair, Verwarming

Snijringkoppelingen twin ferrule (dubbele ring) - RVS AISI-316



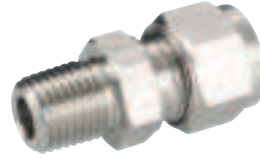
Hydrauliek
Snel-
koppelingen
Afsluiters



Roestvast
staal

Rechte inschroefkoppeling -
BSP (Rp) male

Fittingen	0292	OD mm	BSPP	€
Lucht- conditionering				
MC-3-125RP	3	1/8"	12.50	
MC-3-250RP	3	1/4"	13.50	
Gereedschap				
MC-4-125RP	4	1/8"	12.20	
MC-6-125RP	6	1/8"	12.20	
MC-6-250RP	6	1/4"	14.60	
Vacuum- techniek				
MC-6-375RP	6	3/8"	17.80	
MC-6-500RP	6	1/2"	23.65	
Pneumatiek				
MC-8-125RP	8	1/8"	16.20	
MC-8-250RP	8	1/4"	17.55	
MC-8-375RP	8	3/8"	20.75	
Onderdelen compressoren				
MC-8-500RP	8	1/2"	29.70	
MC-10-250RP	10	1/4"	18.60	
MC-10-375RP	10	3/8"	20.95	
Diversen				
MC-10-500RP	10	1/2"	27.90	
Malleabele fittingen & Staal				
MC-12-250RP	12	1/4"	24.15	
MC-12-375RP	12	3/8"	25.45	
MC-12-500RP	12	1/2"	30.50	
Ringleiding- systemen				
MC-12-750RP	12	3/4"	49.60	
MC-15-500RP	15	1/2"	41.40	
MC-16-375RP	16	3/8"	36.35	
Slangen				
MC-16-500RP	16	1/2"	41.40	
MC-18-500RP	18	1/2"	45.40	
Water, Gas, Sanitair, Verwarming				
MC-18-750RP	18	3/4"	52.80	
MC-20-500RP	20	1/2"	66.20	
MC-20-750RP	20	3/4"	73.20	
MC-22-750RP	22	3/4"	73.20	
MC-22-1000RP	22	1"	80.90	
MC-25-750RP	25	3/4"	78.75	
MC-25-1000RP	25	1"	86.20	



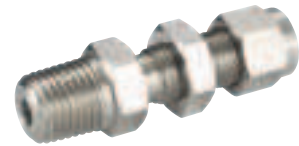
Rechte inschroefkoppeling -
BSP (Rs) male

Fittingen	0292	OD mm	BSPP	€
Lucht- conditionering				
MC-3-125RS	3	1/8"	12.50	
MC-3-250RS	3	1/4"	13.50	
MC-4-125RS	4	1/8"	12.20	
MC-6-125RS	6	1/8"	12.20	
MC-6-250RS	6	1/4"	14.60	
MC-6-375RS	6	3/8"	17.80	
MC-6-500RS	6	1/2"	23.65	
MC-8-125RS	8	1/8"	16.20	
MC-8-250RS	8	1/4"	17.55	
MC-8-375RS	8	3/8"	20.75	
MC-8-500RS	8	1/2"	29.70	
MC-10-250RS	10	1/4"	18.60	
MC-10-375RS	10	3/8"	20.95	
MC-10-500RS	10	1/2"	27.90	
MC-12-250RS	12	1/4"	24.15	
MC-12-375RS	12	3/8"	25.45	
MC-12-500RS	12	1/2"	41.60	
MC-12-750RS	12	3/4"	49.60	
MC-16-375RS	16	3/8"	36.35	
MC-16-500RS	16	1/2"	41.40	
MC-18-500RS	18	1/2"	45.40	
MC-18-750RS	18	3/4"	52.80	
MC-20-500RS	20	1/2"	66.20	
MC-20-750RS	20	3/4"	73.20	
MC-22-750RS	22	3/4"	73.20	
MC-22-1000RS	22	1"	80.90	
MC-25-750RS	25	3/4"	78.75	
MC-25-1000RS	25	1"	86.20	



Rechte inschroefkoppeling -
BSP male met Viton O-ring

Fittingen	0292	OD mm	BSPP	€
OMC-6-125EO	6	1/8"	17.25	
OMC-6-250EO	6	1/4"	17.00	
OMC-6-375EO	6	3/8"	22.30	
OMC-6-500EO	6	1/2"	30.80	
OMC-10-250EO	10	1/4"	24.70	
OMC-10-375EO	10	3/8"	24.95	
OMC-10-500EO	10	1/2"	34.20	
OMC-12-250EO	12	1/4"	26.00	
OMC-12-375EO	12	3/8"	27.05	
OMC-12-500EO	12	1/2"	34.50	



Schotkoppeling - NPT male

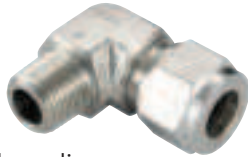
Fittingen	0292	OD mm	NPTF	€
BMC-6-125N	6	1/8"	20.20	
BMC-6-250N	6	1/4"	20.45	
BMC-8-125N	8	1/8"	23.10	
BMC-8-250N	8	1/4"	23.40	
BMC-10-250N	10	1/4"	28.15	
BMC-10-375N	10	3/8"	28.65	
BMC-10-500N	10	1/2"	35.05	
BMC-12-250N	12	1/4"	36.90	
BMC-12-375N	12	3/8"	41.65	
BMC-12-500N	12	1/2"	43.00	



Tee inschroefkoppeling - NPT male

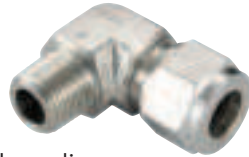
Fittingen	0292	OD mm	NPTF	€
MBT-6-125N	6	1/8"	32.60	
MBT-6-250N	6	1/4"	36.35	
MBT-8-125N	8	1/8"	39.25	
MBT-8-250N	8	1/4"	41.90	
MBT-10-250N	10	1/4"	45.65	
MBT-12-250N	12	1/4"	54.45	
MBT-12-375N	12	3/8"	61.55	
MBT-12-500N	12	1/2"	68.40	
MBT-16-500N	16	1/2"	88.60	

Snijringkoppelingen twin ferrule (dubbele ring) - RVS AISI-316



Knie inschroefkoppeling - NPT male

	0292	OD mm	NPTF	€
ME-3-125N		3	1/8"	17.55
ME-3-250N		3	1/4"	20.95
ME-4-125N		4	1/8"	18.85
ME-4-250N		4	1/4"	21.80
ME-6-125N		6	1/8"	18.60
ME-6-250N		6	1/4"	19.65
ME-6-375N		6	3/8"	27.05
ME-6-500N		6	1/2"	34.20
ME-8-125N		8	1/8"	20.95
ME-8-250N		8	1/4"	21.50
ME-8-375N		8	3/8"	28.90
ME-8-500N		8	1/2"	39.00
ME-10-250N		10	1/4"	28.15
ME-10-375N		10	3/8"	29.70
ME-10-500N		10	1/2"	40.85
ME-12-250N		12	1/4"	37.10
ME-12-375N		12	3/8"	37.10
ME-12-500N		12	1/2"	43.00
ME-12-750N		12	3/4"	61.00
ME-15-500N		15	1/2"	56.50
ME-16-375N		16	3/8"	56.50
ME-16-500N		16	1/2"	56.50
ME-16-750N		16	3/4"	67.90
ME-18-500N		18	1/2"	70.30
ME-18-750N		18	3/4"	70.30
ME-20-500N		20	1/2"	92.85
ME-20-750N		20	3/4"	104.80
ME-22-750N		22	3/4"	104.80
ME-22-1000N		22	1"	111.20
ME-25-750N		25	3/4"	108.25
ME-25-1000N		25	1"	117.50



Knie inschroefkoppeling - BSPT male

	0292	OD mm	BSPT	€
ME-3-125RT		3	1/8"	17.55
ME-3-250RT		3	1/4"	20.95
ME-4-125RT		4	1/8"	18.85
ME-4-250RT		4	1/4"	21.80
ME-6-125RT		6	1/8"	18.60
ME-6-250RT		6	1/4"	19.65
ME-6-375RT		6	3/8"	27.05
ME-6-500RT		6	1/2"	34.20
ME-8-125RT		8	1/8"	20.95
ME-8-250RT		8	1/4"	21.50
ME-8-375RT		8	3/8"	28.90
ME-8-500RT		8	1/2"	39.00
ME-10-250RT		10	1/4"	28.15
ME-10-375RT		10	3/8"	29.70
ME-10-500RT		10	1/2"	40.85
ME-12-250RT		12	1/4"	37.10
ME-12-375RT		12	3/8"	37.10
ME-12-500RT		12	1/2"	43.00
ME-12-750RT		12	3/4"	61.00
ME-16-375RT		16	3/8"	56.50
ME-16-500RT		16	1/2"	56.50
ME-18-500RT		18	1/2"	70.30
ME-18-750RT		18	3/4"	70.30
ME-20-500RT		20	1/2"	104.80
ME-20-750RT		20	3/4"	104.80
ME-22-750RT		22	3/4"	104.80
ME-22-1000RT		22	1"	111.15
ME-25-750RT		25	3/4"	108.25
ME-25-1000RT		25	1"	117.50



Knie inschroefkoppeling - draaibaar - BSP male met Viton O-ring

	0292	OD mm	BSPP	€
MEP-6-125PR		6	1/8"	28.40
MEP-6-250PR		6	1/4"	36.10
MEP-8-125PR		8	1/8"	31.85
MEP-8-250PR		8	1/4"	37.40
MEP-10-250PR		10	1/4"	37.95
MEP-10-375PR		10	3/8"	55.70
MEP-12-250PR		12	1/4"	58.35
MEP-12-375PR		12	3/8"	59.95
MEP-12-500PR		12	1/2"	74.50
MEP-12-750PR		12	3/4"	84.85



Zij-tee inschroefkoppeling - NPT male

	0292	OD mm	NPTF	€
MRT-6-125N		6	1/8"	32.60
MRT-6-250N		6	1/4"	36.35
MRT-8-250N		8	1/4"	41.90
MRT-12-250N		12	1/4"	61.55
MRT-12-375N		12	3/8"	61.55
MRT-12-500N		12	1/2"	68.40
MRT-16-500N		16	1/2"	88.60



Tee inschroefkoppeling - draaibaar - BSP male met Viton O-ring

	0292	OD mm	BSPP	€
MBTP-6-125PR		6	1/8"	41.15
MBTP-6-250PR		6	1/4"	53.85
MBTP-8-125PR		8	1/8"	47.75
MBTP-8-250PR		8	1/4"	54.90
MBTP-10-250PR		10	1/4"	57.05
MBTP-12-375PR		12	3/8"	81.45
MBTP-12-500PR		12	1/2"	105.80



Zij-tee inschroefkoppeling - draaibaar - BSP male met Viton O-ring

	0292	OD mm	BSPP	€
MRTP-6-125PR		6	1/8"	41.15
MRTP-6-250PR		6	1/4"	53.85
MRTP-8-125PR		8	1/8"	47.75
MRTP-8-250PR		8	1/4"	54.90
MRTP-10-250PR		10	1/4"	57.05
MRTP-12-375PR		12	3/8"	81.45
MRTP-12-500PR		12	1/2"	105.80

- Hydrauliek
- Snelkoppelingen
- Afsluiters
- Roestvast staal
- Fittingen
- Luchtconditionering
- Gereedschap
- Vacuümtechniek
- Pneumatiek
- Onderdelen compressoren
- Diversen
- Malleabele fittingen & Staal
- Ringleidingssystemen
- Slangen
- Water, Gas, Sanitair, Verwarming

Snijringkoppelingen twin ferrule (dubbele ring) - RVS AISI-316



Hydrauliek
Snel-
koppelingen
Afsluiters

Roestvast
staal

Rechte opschroefkoppeling - NPT female



Fittingen	0292	OD mm	NPTF	€
Lucht- conditionering				
FC-3-125N		3	1/8"	13.80
FC-3-250N		3	1/4"	15.10
FC-4-125N		4	1/8"	15.10
Gereedschap				
FC-6-125N		6	1/8"	15.70
FC-6-250N		6	1/4"	16.45
Vacuum- techniek				
FC-6-375N		6	3/8"	19.65
FC-6-500N		6	1/2"	24.15
Pneumatiek				
FC-8-125N		8	1/8"	16.45
FC-8-250N		8	1/4"	18.30
Onderdelen compressoren				
FC-8-375N		8	3/8"	20.75
FC-8-500N		8	1/2"	30.00
FC-10-250N		10	1/4"	20.75
Diversen				
FC-10-375N		10	3/8"	23.85
FC-10-500N		10	1/2"	30.50
Malleabele fittings & Staal				
FC-12-250N		12	1/4"	24.95
FC-12-375N		12	3/8"	26.30
FC-12-500N		12	1/2"	32.40
Ringleiding- systemen				
FC-15-500N		15	1/2"	37.40
FC-16-500N		16	1/2"	37.40
FC-20-500N		20	1/2"	59.70
Slangen				
FC-20-750N		20	3/4"	65.20
FC-22-750N		22	3/4"	66.05
Water, Gas, Sanitair, Verwarming				
FC-22-1000N		22	1"	91.50
FC-25-750N		25	3/4"	81.95
FC-25-1000N		25	1"	95.50



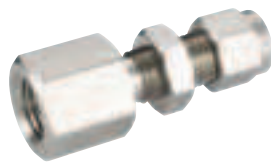
Tee opschroefkoppeling - NPT female

Fittingen	0292	OD mm	NPTF	€
FBT-6-125N		6	1/8"	37.70
FBT-6-250N		6	1/4"	44.55
FBT-8-125N		8	1/8"	44.55
FBT-8-250N		8	1/4"	50.90
FBT-10-250N		10	1/4"	57.05
FBT-12-250N		12	1/4"	62.60
FBT-12-375N		12	3/8"	68.95
FBT-16-500N		16	1/2"	105.25

Rechte opschroefkoppeling - BSPT female



Fittingen	0292	OD mm	BSPT	€
FC-3-125RT		3	1/8"	13.80
FC-6-125RT		6	1/8"	15.70
FC-6-250RT		6	1/4"	16.45
FC-6-375RT		6	3/8"	19.65
FC-6-500RT		6	1/2"	24.15
FC-8-125RT		8	1/8"	16.45
FC-8-250RT		8	1/4"	18.30
FC-8-375RT		8	3/8"	20.75
FC-8-500RT		8	1/2"	30.00
FC-10-125RT		10	1/8"	20.75
FC-10-250RT		10	1/4"	21.20
FC-10-375RT		10	3/8"	23.85
FC-10-500RT		10	1/2"	30.50
FC-12-125RT		12	1/8"	24.95
FC-12-250RT		12	1/4"	24.95
FC-12-375RT		12	3/8"	26.30
FC-12-500RT		12	1/2"	32.90
FC-12-750RT		12	3/4"	45.40
FC-15-375RT		15	3/8"	34.00
FC-15-500RT		15	1/2"	37.40
FC-20-500RT		20	1/2"	59.70
FC-20-750RT		20	3/4"	65.20
FC-22-750RT		22	3/4"	66.05
FC-22-1000RT		22	1"	90.20
FC-25-750RT		25	3/4"	81.95
FC-25-1000RT		25	1"	95.50



Schotkoppeling - NPT female

Fittingen	0292	OD mm	NPTF	€
BFC-6-125N		6	1/8"	23.85
BFC-6-250N		6	1/4"	24.70
BFC-8-125N		8	1/8"	25.45
BFC-10-250N		10	1/4"	34.00
BFC-12-375N		12	3/8"	43.80
BFC-12-500N		12	1/2"	51.20

Rechte opschroefkoppeling - BSP female



Fittingen	0292	OD mm	BSPP	€
FC-3-250RG		3	1/4"	15.10
FC-6-250RG		6	1/4"	16.45
FC-6-375RG		6	3/8"	19.65
FC-6-500RG		6	1/2"	24.15
FC-8-250RG		8	1/4"	18.30
FC-8-375RG		8	3/8"	20.75
FC-8-500RG		8	1/2"	30.00
FC-10-250RG		10	1/4"	21.20
FC-10-375RG		10	3/8"	23.85
FC-10-500RG		10	1/2"	30.50
FC-12-250RG		12	1/4"	24.95
FC-12-375RG		12	3/8"	26.30
FC-12-500RG		12	1/2"	32.40
FC-20-500RG		20	1/2"	59.70
FC-22-500RG		22	1/2"	59.70



Knie opschroefkoppeling - NPT female

Fittingen	0292	OD mm	NPTF	€
FE-6-125N		6	1/8"	24.95
FE-6-250N		6	1/4"	30.50
FE-6-500N		6	1/2"	53.85
FE-8-250N		8	1/4"	33.70
FE-10-125N		10	1/8"	37.70
FE-10-250N		10	1/4"	38.20
FE-12-250N		12	1/4"	41.65
FE-12-375N		12	3/8"	46.15
FE-12-500N		12	1/2"	62.85
FE-16-500N		16	1/2"	69.25

Snijringkoppelingen twin ferrule (dubbele ring) - RVS AISI-316



Zij-tee opschroefkoppeling - NPT female

	0292	OD mm	NPTF	€
FRT-6-125N	6	1/8"		37.70
FRT-6-250N	6	1/4"		44.55
FRT-8-125N	8	1/8"		44.55
FRT-8-250N	8	1/4"		50.90
FRT-10-250N	10	1/4"		57.05
FRT-12-250N	12	1/4"		63.15
FRT-12-375N	12	3/8"		68.95
FRT-16-500N	16	1/2"		105.25



Rechte verloopkoppeling

	0292	OD A mm	OD B mm	€
RU-6-3	6	3		17.25
RU-6-4	6	4		17.80
RU-8-6	8	6		20.95
RU-10-6	10	6		24.70
RU-10-8	10	8		25.75
RU-12-6	12	6		29.20
RU-12-8	12	8		31.30
RU-12-10	12	10		32.40
RU-16-10	16	10		40.30
RU-16-12	16	12		43.80
RU-18-12	18	12		55.70
RU-25-18	25	18		94.90
RU-25-20	25	20		110.05



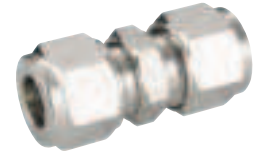
Rechte verloopkoppeling mm x inch

	0292	OD A mm	OD B mm	€
U-3-125	3	1/8"		15.95
U-4-125	4	1/8"		16.70
U-4-250	4	1/4"		17.80
U-6-125	6	1/8"		18.05
U-6-250	6	1/4"		18.05
U-6-312	6	5/16"		21.20
U-8-250	8	1/4"		21.80
U-8-375	8	3/8"		23.85
U-10-125	10	1/8"		23.40
U-10-250	10	1/4"		25.25
U-10-312	10	5/16"		26.55
U-10-375	10	3/8"		25.25
U-12-312	12	5/16"		32.60
U-12-375	12	3/8"		33.70
U-12-500	12	1/2"		36.10
U-15-500	15	1/2"		47.45
U-16-625	16	5/8"		48.30
U-18-750	18	3/4"		64.20
U-20-500-FT	20	1/2"		95.75
U-20-1000	20	1"		110.05
U-25-1000	25	1"		114.05



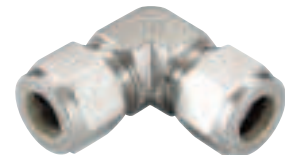
Schotkoppeling

	0292	OD mm	€
BU-3-FT	3		21.10
BU-4	4		34.70
BU-6	6		25.25
BU-8	8		29.70
BU-10	10		34.00
BU-12-FT	12		53.45
BU-14	14		76.10
BU-15	15		76.10
BU-16	16		76.10
BU-18	18		84.85
BU-20	20		116.70
BU-25	25		168.40



Rechte koppeling

	0292	OD mm	€
U-3	3		20.25
U-4	4		14.85
U-6	6		16.20
U-8	8		20.20
U-10	10		23.85
U-12	12		34.50
U-14	14		44.05
U-15	15		44.05
U-16	16		44.05
U-18	18		64.20
U-20	20		82.20
U-22	22		82.20
U-25	25		108.25



Kniekoppeling

	0292	OD mm	€
UE-3	3		21.20
UE-4	4		23.10
UE-6	6		22.55
UE-8	8		26.80
UE-10	10		33.45
UE-12	12		46.95
UE-14	14		73.50
UE-15	15		73.50
UE-16	16		73.50
UE-18	18		95.50
UE-20	20		126.00
UE-22	22		126.00
UE-25	25		153.30

Hydrauliek
Snelkoppelingen
Afsluiters
Roestvast staal
Fittingen
Luchtconditionering
Gereedschap
Vacuümtechniek
Pneumatiek
Onderdelen compressoren
Diversen
Malleabele fittingen & Staal
Ringleidingssystemen
Slangen
Water, Gas, Sanitair, Verwarming

Snijringkoppelingen twin ferrule (dubbele ring) - RVS AISI-316



Hydrauliek

Snel-
koppelingen

Afsluiters

Roestvast
staal

Fittingen

Lucht-
conditionering

Gereedschap

Vacuüm-
techniek

Pneumatiek

Onderdelen
compressoren

Diversen

Malleabele
fittingen
& StaalRingleiding-
systemen

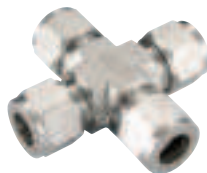
Slangen

Water, Gas,
Sanitair,
Verwarming

Tee koppeling



0292	OD mm	€
UT-3	3	32.40
UT-4	4	33.45
UT-6	6	32.60
UT-8	8	41.65
UT-10	10	50.15
UT-12	12	67.10
UT-14	14	105.80
UT-15	15	105.80
UT-16	16	105.80
UT-18	18	135.25
UT-20	20	180.05
UT-22	22	180.05
UT-25	25	224.05



Kruiskoppeling



0292	OD mm	€
UC-3	3	43.80
UC-6	6	45.90
UC-8	8	59.20
UC-10	10	68.20
UC-12	12	91.80
UC-16	16	153.85
UC-18	18	198.90
UC-20	20	259.90
UC-25	25	310.25

Rechte verloopkoppeling
snijring x steel

0292	OD A mm	OD B mm	€
R-3-4	3	4	11.15
R-3-6	3	6	11.15
R-3-10	3	10	11.70
R-4-6	4	6	11.70
R-6-3	6	3	12.50
R-6-8	6	8	14.10
R-6-10	6	10	13.50
R-6-12	6	12	14.10
R-6-18	6	18	15.40
R-8-6	8	6	15.70
R-8-10	8	10	15.70
R-8-12	8	12	16.45
R-10-6	10	6	17.55
R-10-8	10	8	17.55
R-10-12	10	12	18.05
R-10-15	10	15	18.60
R-10-18	10	18	20.75
R-12-6	12	6	23.10
R-12-8	12	8	23.10
R-12-10	12	10	23.40
R-12-16	12	16	24.95
R-12-18	12	18	24.95
R-12-20	12	20	24.70
R-12-22	12	22	29.20
R-12-25	12	25	32.10
R-16-12	16	12	35.30
R-18-12	18	12	42.45
R-18-16	18	16	43.80
R-18-20	18	20	44.30
R-18-22	18	22	44.30
R-18-25	18	25	45.10
R-20-16	20	16	52.00
R-20-18	20	18	52.00
R-20-22	20	22	53.10
R-20-25	20	25	55.45
R-22-18	22	18	52.50
R-22-20	22	22	53.10
R-22-25	22	25	56.25
R-25-18	25	18	84.85
R-25-20	25	20	84.85

Poortverbinding



0292	OD mm	€
PC-3	3	8.00
PC-6	6	7.40
PC-8	8	8.00
PC-10	10	9.30
PC-12-FT	12	11.80
PC-15-FT	15	12.40
PC-16	16	14.60
PC-18-FT	18	19.00
PC-20	20	23.40
PC-25	25	32.40



Verloop poortverbinding



0292	OD A mm	OD B mm	€
RPC-6-3	6	3	8.50
RPC-8-6	8	6	9.85
RPC-10-6	10	6	10.40
RPC-10-8	10	8	11.45
RPC-12-6	12	6	12.20
RPC-12-8	12	8	13.50
RPC-12-10	12	10	14.10
RPC-16-12	16	12	21.50

Snijringkoppelingen twin ferrule (dubbele ring) - RVS AISI-316



Eindkap

C-3		3	8.50
C-4		4	9.00
C-6		6	9.30
C-8		8	12.20
C-10		10	16.70
C-12		12	18.60
C-14		14	26.80
C-15		15	26.80
C-16		16	26.80
C-18		18	37.70
C-20		20	43.20
C-22		22	43.20
C-25		25	63.70

Plug

P-3-FT		3	8.25
P-4		4	9.00
P-6-FT		6	11.00
P-8		8	12.50
P-10		10	14.60
P-12		12	19.15
P-14		14	26.80
P-15		15	26.80
P-16		16	26.80
P-18		18	34.20
P-20		20	39.80
P-22		22	39.80
P-25		25	55.70

Wartelmoer

N-3		3	2.95
N-4		4	2.95
N-6		6	3.20
N-8		8	4.50
N-10		10	5.20
N-12		12	7.40
N-14		14	12.75
N-15		15	12.75
N-16		16	12.75
N-18		18	14.10
N-20		20	16.70
N-22		22	16.70
N-25-FT		25	19.20



Snijring - voor (front ferrule)

BF-3		3	2.45
BF-4		4	2.45
BF-6		6	2.00
BF-8		8	1.75
BF-10		10	2.90
BF-12		12	3.35
BF-14		14	6.10
BF-15		15	6.10
BF-16		16	6.10
BF-18		18	6.65
BF-20		20	7.60
BF-22		22	7.60
BF-25		25	10.90



Snijring - achter (back ferrule)

FF-3		3	2.90
FF-4		4	2.20
FF-6		6	2.00
FF-8		8	2.40
FF-10		10	2.55
FF-12		12	3.35
FF-14		14	6.10
FF-15		15	6.10
FF-16		16	6.10
FF-18		18	6.65
FF-20		20	7.60
FF-22		22	7.60
FF-25		25	10.90



Moer - schotdoorvoerkoppeling

BLN-3		3	1.60
BLN-4		4	1.60
BLN-6		6	2.15
BLN-8		8	2.15
BLN-10-FT		10	3.40
BLN-12-FT		12	4.05
BLN-14		14	5.90
BLN-15		15	5.90
BLN-16-FT		16	6.30
BLN-18		18	7.20
BLN-20-FT		20	10.20
BLN-25		25	14.60

Hydrauliek
Snelkoppelingen
Afsluiters
Roestvast staal
Fittingen
Luchtconditionering
Gereedschap
Vacuümtechniek
Pneumatiek
Onderdelen compressoren
Diversen
Malleabele fittingen & Staal
Ringleidingssystemen
Slangen
Water, Gas, Sanitair, Verwarming

Draadfittingen - hogedruk - RVS AISI-316



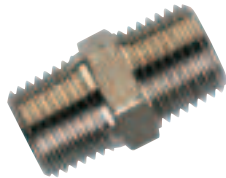
Hydrauliek
Snelkoppelingen
Afsluiters
Roestvast staal

Industriële topkwaliteit

Materiaal: RVS AISI-316
Normering: BSPT schroefdraad, ISO 7.1, BS-21 (British Standard) en DIN2999
BSP Parallel schroefdraad, ISO 228, klasse A
Veiligheidsfactor: 4

140 bar (bij 20°C) 225°C

Fittingen



Borstnippel - BSPT male

RVSD	BSPT	L mm	€	
60001010	1/8"	11	19.5	9.50
60001313	1/4"	14	27	11.45
60001717	3/8"	17	28	12.65
60002121	1/2"	22	33.5	15.10
60002727	3/4"	27	40	17.30

Gereedschap

Vacuumtechniek

Pneumatiek

Onderdelen compressoren

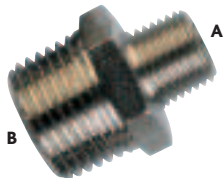
Diversen

Malleabele fittingen & Staal

Ringleidingssystemen

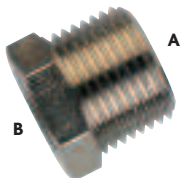
Slangen

Water, Gas, Sanitair, Verwarming



Verlooppnippel - BSPT male

RVSD	BSPT A	BSPT B	L mm	€	
60021013	1/8"	1/4"	14	23.5	11.90
60021017	1/8"	3/8"	17	24	12.95
60021317	1/4"	3/8"	17	27.5	12.95
60021321	1/4"	1/2"	22	30.5	15.00
60021721	3/8"	1/2"	22	31	15.10
60022127	1/2"	3/4"	27	37.5	20.20



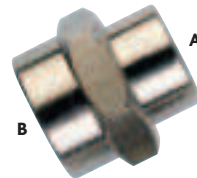
Verlooping - BSPT male/BSP female

RVSD	BSPT A	BSPT B	L mm	€	
60041310	1/4"	1/8"	14	16	12.05
60041710	3/8"	1/8"	17	16.5	13.05
60041713	3/8"	1/4"	17	16.5	13.55
60042113	1/2"	1/4"	22	19.5	12.25
60042117	1/2"	3/8"	22	19.5	16.85
60042721	3/4"	1/2"	27	23.5	20.40



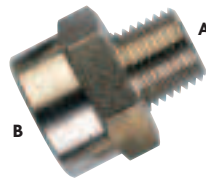
Sok - BSP female

RVSD	BSPP	L mm	€	
60061010	1/8"	14	15	5.90
60061313	1/4"	17	22	8.25
60061717	3/8"	22	24	11.80
60062121	1/2"	27	30	18.90
60062727	3/4"	32	32	28.30



Verloopsok - BSP female

RVSD	BSPP A	BSPP B	L mm	€	
60071013	1/8"	1/4"	17	19	7.80
60071317	1/4"	3/8"	22	23	11.45
60071721	3/8"	1/2"	24	27.5	14.30
60072127	1/2"	3/4"	30	30	24.20



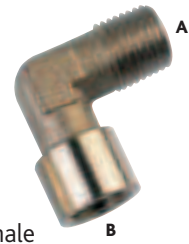
Neusstuk - conisch dichtend - BSPT male/BSP female

RVSD	BSPT A	BSPP B	L mm	€	
60081013	1/8"	1/4"	17	22	13.30
60081317	1/4"	3/8"	22	27	16.15
60081321	1/4"	1/2"	24	30	20.00
60081721	3/8"	1/2"	24	30.5	20.40
60082127	1/2"	3/4"	32	35	26.00



Kniesok - BSP female

RVSD	BSPP	L mm	€	
60091010	1/8"	11	21	23.05
60091313	1/4"	12	25.5	31.25
60091717	3/8"	15	28	39.20
60092121	1/2"	20	32	48.20



Knie inschroefsok - BSPT male/BSP female

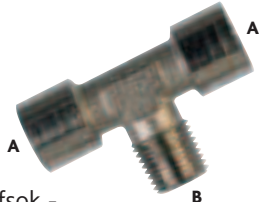
RVSD	BSPT A	BSPP B	L mm	€	
60101010	1/8"	1/8"	11	18	23.05
60101313	1/4"	1/4"	12	24	31.25
60101717	3/8"	3/8"	15	27	39.20
60102121	1/2"	1/2"	20	29.5	48.20



Tee sok - BSP female

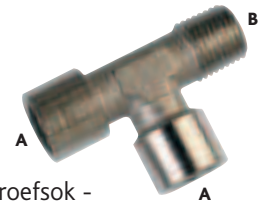
RVSD	BSPP	L mm	€	
60121010	1/8"	12	37	28.40
60121313	1/4"	12	49	39.95
60121717	3/8"	15	54	51.70
60122121	1/2"	20	64	63.65

Draadfittingen - hogedruk - RVS AISI-316



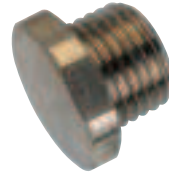
Tee inschroefsok - BSPT male/BSP female

RVSD	BSPP	BSPT	C	L mm	€
60131010	1/8"	1/8"	12	37	28.40
60131313	1/4"	1/4"	12	49	39.95
60131717	3/8"	3/8"	15	54	51.70
60132121	1/2"	1/2"	20	64	63.65



Zij-tee inschroefsok - BSPT male/BSP female

RVSD	BSPP	BSPT	C	L mm	€
60141010	1/8"	1/8"	12	36	28.40
60141313	1/4"	1/4"	12	47.5	39.95
60141717	3/8"	3/8"	15	52.5	51.70
60142121	1/2"	1/2"	20	61.5	63.65



Plug - zeskante kop - BSP male

RVSD	BSPP	C	L mm	€
60181000	1/8"	14	10	11.10
60181300	1/4"	17	13	12.25
60181700	3/8"	19	13.5	13.45
60182100	1/2"	24	14.5	16.75
60182700	3/4"	30	16	20.75



Inbusplug - BSPT male

RVSD	BSPT	C	L mm	€
60371000	1/8"	5	7.5	9.50
60371300	1/4"	6	10	10.30
60371700	3/8"	8	11	11.35
60372100	1/2"	10	13	14.45

- Hydrauliek
- Snelkoppelingen
- Afsluiters
- Roestvast staal
- Fittingen
- Luchtconditionering
- Gereedschap
- Vacuümtechniek
- Pneumatiek
- Onderdelen compressoren
- Diversen
- Malleabele fittingen & Staal
- Ringleidingssystemen
- Slangen
- Water, Gas, Sanitair, Verwarming

Push-in koppelingen RVS AISI-316L



Hydrauliek

Revolutionair ontwerp voor veeleisende toepassingen

Normering: BSPT: ISO 7.1, BS21 en DIN2999. BSP: ISO 228A. METRISCH: ISO R/262

Snelkoppelingen

Toepassingen: multifunctioneel: veel gebruikt in de voedingmiddelenindustrie, farmaceutische industrie, chemische industrie, medische toepassingen etc.

Afsluiters

Media: perslucht, vacuüm, vloeistoffen, gassen.

Roestvast staal

Materiaal: huis, ontkoppeling en tandring: RVS AISI-316L
veiligheidsring: teflon
lip-seal en O-ring (bij BSP draad): viton

Fittingen

Luchtconditionering

Gereedschap

Vacuumtechniek

Pneumatiek

Onderdelen compressoren

Diversen

Malleabele fittingen & Staal

Ringleidingssystemen

Slangen

Water, Gas, Sanitair, Verwarming



Rechte inschroefkoppeling push-in - BSPT male

RVS	OD mm	BSPT	L mm	€
64000410	4	1/8"	10 19	12.10
64000413	4	1/4"	14 23	13.45
64000610	6	1/8"	13 22,5	14.35
64000613	6	1/4"	14 24,5	15.00
64000810	8	1/8"	14 25,5	15.90
64010813BSPT	8	1/4"	14 25	16.20
64001013	10	1/4"	17 30,5	21.00
64001017	10	3/8"	17 28	23.20
64001217	12	3/8"	21 33,5	33.25
64001221	12	1/2"	22 32	36.95



Rechte inschroefkoppeling push-in - BSP male met O-ring

RVS	OD mm	BSPT	L mm	€
64010405	4	M5	10 20	16.60
64010410	4	1/8"	10 19,5	16.30
64010413	4	1/4"	15 19,5	16.45
64010610	6	1/8"	13 23,5	16.30
64010613	6	1/4"	15 23,5	18.30
64010810	8	1/8"	14 25,5	18.15
64010813BSP	8	1/4"	15 23,5	20.50
64011013	10	1/4"	17 30	22.55
64011017	10	3/8"	17 27	27.25
64011217	12	3/8"	21 34	34.25
64011221	12	1/2"	22 31	38.05



Rechte koppeling push-in

RVS	OD mm	B mm	L mm	€
64110400	4	10,5	31	18.05
64110600	6	12,5	35	18.20
64110800	8	14,5	36,5	20.85
64111000	10	17,5	42	28.20
64111200	12	20,5	48	41.85



Schotdoorvoerkoppeling push-in

RVS	OD mm	BSPT	L mm	€
64090412	4	M12 x 1	17 31	29.70
64090614	6	M14 x 1	17 35	32.10
64090816	8	M16 x 1	19 37	38.45
64091020	10	M20 x 1	24 42	48.85
64092122	12	M22 x 1	26 48	60.15



Knie inschroefkoppeling push-in - BSPT male

RVS	OD mm	BSPT	€
64430410	4	1/8"	30.65
64430413	4	1/4"	33.40
64430610	6	1/8"	30.80
64430613	6	1/4"	35.50
64430810	8	1/8"	36.20
64430813	8	1/4"	36.75
64431013	10	1/4"	48.60
64431017	10	3/8"	49.70
64431021	10	1/2"	51.45
64431217	12	3/8"	63.55
64431221	12	1/2"	65.35



Knie inschroefkoppeling push-in - BSP male met O-ring

RVS	OD mm	BSPT	€
64050405	4	M5	30.10
64050410	4	1/8"	31.00
64050413	4	1/4"	33.50
64050610	6	1/8"	33.40
64050613	6	1/4"	35.50
64050810	8	1/8"	36.65
64050813	8	1/4"	36.90
64051013	10	1/4"	47.10
64051017	10	3/8"	53.80
64051021	10	1/2"	67.30
64051217	12	3/8"	64.85
64051221	12	1/2"	82.50

Push-in koppelingen RVS AISI-316L



4



Kniekoppeling push-in



64020400	4	23.25
64020600	6	24.85
64020800	8	28.80
64021000	10	39.40
64021200	12	54.70



Tee inschroefkoppeling push-in -
BSPT male



64440410	4	1/8"	11	36	32.20
64440413	4	1/4"	14	36	40.70
64440610	6	1/8"	11	42	40.90
64440613	6	1/4"	14	42	43.45
64440810	8	1/8"	11	45	45.30
64440813	8	1/4"	14	45	45.95
64441013	10	1/4"	14	52	62.70
64441017	10	3/8"	17	52	63.70
64441021	10	1/2"	22	52	65.55
64441217	12	3/8"	18	61	82.00
64441221	12	1/2"	22	61	83.75



Tee inschroefkoppeling push-in
- BSP male met O-ring



64060405	4	M5	8	36	36.70
64060410	4	1/8"	13	36	35.65
64060413	4	1/4"	15	36	40.90
64060610	6	1/8"	13	42	43.25
64060613	6	1/4"	15	42	43.50
64060810	8	1/8"	13	45	45.80
64060813	8	1/4"	15	45	46.05
64061013	10	1/4"	15	52	62.95
64061017	10	3/8"	21	52	67.90
64061021	10	1/2"	22	52	81.40
64061217	12	3/8"	21	61	83.15
64061221	12	1/2"	22	61	100.85



Tee koppeling - push-in



64030400	4	36	32.65
64030600	6	42	34.40
64030800	8	45	39.65
64031000	10	52	53.55
64031200	12	61	66.45

Hydrauliek

Snelkoppelingen

Afsluiters

Roestvast staal

Fittingen

Luchtconditionering

Gereedschap

Vacuümtechniek

Pneumatiek

Onderdelen compressoren

Diversen

Malleabele fittingen & Staal

Ringleidingssystemen

Slangen

Water, Gas, Sanitair, Verwarming

www.kelm-uk.com

CONSISTENCY IN TECHNICAL PERFORMANCE RESULTING FROM CERTAINTY IN ENGINEERING CAPABILITY...

KELM™ is a rapidly growing Fluid Power Manufacturer with an absolute focus on Product Excellence.

Resolute in the development of our product ranges within the Fluid Power Industry, KELM's consummate Research & Development Teams are purposeful in generating innovative techniques to satisfy customer requirements.

With a determination to consistently exceed 'Enhanced Quality Performance', KELM™ raises expectations throughout...



SEE
P536